

# \$0 - 14220 112 Avenue, Edmonton

MLS® #E4314132

**\$0**

0 Bedroom, 0.00 Bathroom,  
Office on 0.00 Acres

Huff Bremner Estate Industrial, Edmonton, AB

• 2 spaces available - 1,113 sq.ft. or 2,066 sq.ft. • Tenants have access to common area lounge, auditorium and 4 secure levels of parking • Lower Level is open concept available immediately • Second floor is currently shell space ready for interior improvements • High level of security • Recently upgraded elevator • Quick access to Yellowhead Trail, Stony Plain Road and St.Albert Trail • Parking ratio is approximately 5 stalls per 1,000 sq.ft.

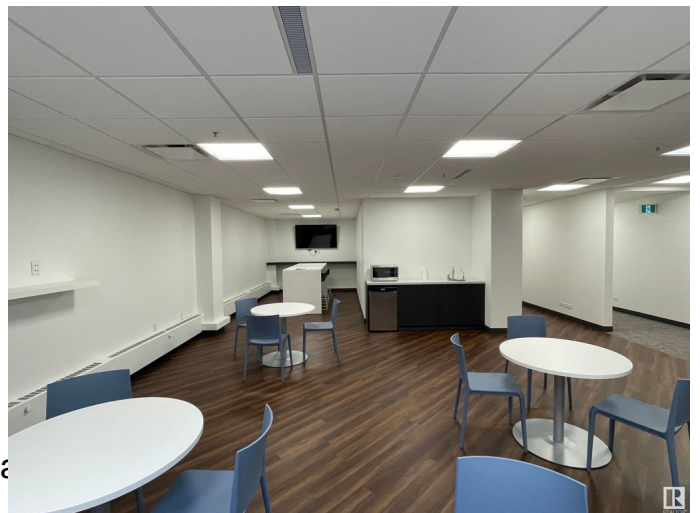
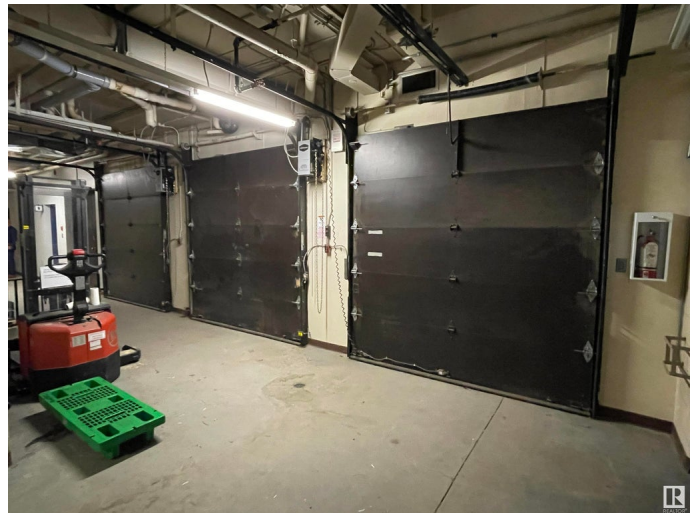
Built in 1950

## Essential Information

MLS® #	E4314132
Bathrooms	0.00
Acres	0.00
Year Built	1950
Type	Office
Status	Active

## Community Information

Address	14220 112 Avenue
Area	Edmonton
Subdivision	Huff Bremner Estate Industrial
City	Edmonton
County	ALBERTA
Province	AB



Postal Code T5M 2T8

### **Exterior**

Exterior Brick

Construction Brick

### **Additional Information**

Date Listed September 20th, 2022

Days on Market 932

Zoning Zone 40

DATA IS DEEMED RELIABLE BUT IS NOT GUARANTEED ACCURATE BY THE REALTORS® ASSOCIATION OF EDMONTON. COPYRIGHT 2025 BY THE REALTORS® ASSOCIATION OF EDMONTON. ALL RIGHTS RESERVED. Trademarks are owned or controlled by the Canadian Real Estate Association (CREA) and identify real estate professionals who are members of CREA (REALTOR®, REALTORS®) and/or the quality of services they provide (MLS®, Multiple Listing Service®)

Listing information last updated on April 9th, 2025 at 8:47pm MDT