

Courtesy Of Ralph E Soldan Of Homewise Realty

## \$1,299,000 - 6138 50 Avenue, Vegreville

MLS® #E4373035

**\$1,299,000**

0 Bedroom, 0.00 Bathroom,  
Land Commercial on 0.00 Acres

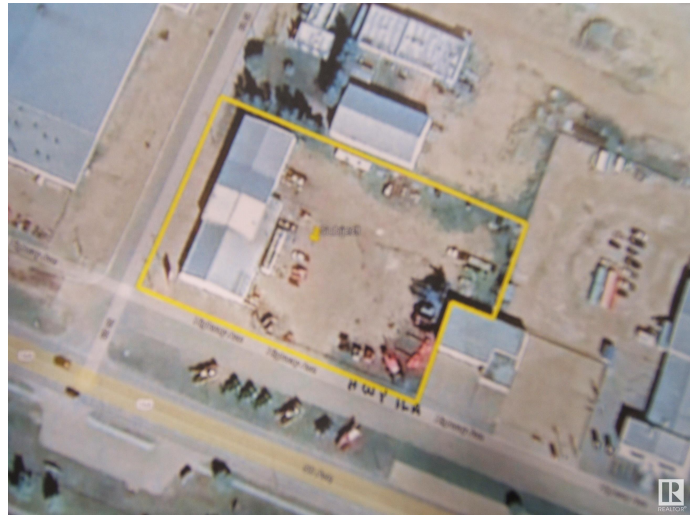
Vegreville, Vegreville, AB

Excellent Opportunity to Invest on a Prime Property Located at 6138-50 ave. Vegreville, Alberta. Great Exposure as Highway Frontage, Located on Highway 16A, Close to a Ford Dealership, Chrysler Dealership, The Brick Warehouse and only 1 Block from Secondary Highway 857. 1.72 Acre Fenced Lot Features a 13000 sq. ft. Metal Clad Building. Building is Presently Occupied by an Agricultural Equipment Dealership with 4 Years left on a 5 Year Lease. Building Features Front Reception Area, 4 Offices, Parts Department, Copier/Storage Room, Lunchroom and Washroom. Back Part of Building Features 2 Offices, Service Desk, Washroom, Mezzanine with Storage and Lunchroom and a Service Shop for Large Equipment. Possibilities for Property in the Future are Vast. Excellent Income Opportunity with Present Tenant. Must View Property!

Built in 1977

### Essential Information

MLS® #	E4373035
Price	\$1,299,000
Bathrooms	0.00
Acres	0.00
Year Built	1977
Type	Land Commercial



Status Active

### Community Information

Address 6138 50 Avenue  
Area Vegreville  
Subdivision Vegreville  
City Vegreville  
County ALBERTA  
Province AB  
Postal Code T9C 1N6

### Exterior

Exterior Brick, Steel Frame  
Construction Brick, Steel Frame

### Additional Information

Date Listed February 10th, 2024  
Days on Market 398  
Zoning Zone 60

DATA IS DEEMED RELIABLE BUT IS NOT GUARANTEED ACCURATE BY THE REALTORS® ASSOCIATION OF EDMONTON. COPYRIGHT 2025 BY THE REALTORS® ASSOCIATION OF EDMONTON. ALL RIGHTS RESERVED. Trademarks are owned or controlled by the Canadian Real Estate Association (CREA) and identify real estate professionals who are members of CREA (REALTOR®, REALTORS®) and/or the quality of services they provide (MLS®, Multiple Listing Service®)

Listing information last updated on March 14th, 2025 at 2:32am MDT