

\$2,150,000 - 26322 524 Township Road, Rural Parkland County

MLS® #E4383362

\$2,150,000

0 Bedroom, 0.00 Bathroom,
Land Commercial on 0.00 Acres

Acheson, Rural Parkland County, AB

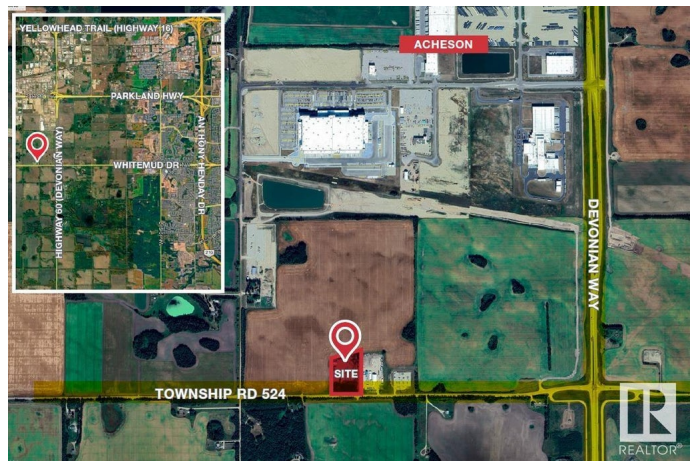
This Industrial Land consists of 5.09 Acres± suitable for development/ storage. This property is fully fenced and secured, with approximately fifty percent of the site improved with crushed concrete and gravel. The land has 1,440 Sq.Ft. office structure and 2,688 Sq.Ft. steel frame Quonset negotiable within this deal. The property is partially serviced with power and gas onsite, and has cistern and septic available within the office structure. The site is well located on the southern border of Acheson Structure Plan Boundary and is West of HWY 60 on HWY 628 (continuation of the Whitemud Freeway).

Essential Information

MLS® #	E4383362
Price	\$2,150,000
Bathrooms	0.00
Acres	0.00
Type	Land Commercial
Status	Active

Community Information

Address	26322 524 Township Road
Area	Rural Parkland County
Subdivision	Acheson



City	Rural Parkland County
County	ALBERTA
Province	AB
Postal Code	T7X 5B2

Exterior

Exterior	Quonset
Construction	Quonset

Additional Information

Date Listed	April 22nd, 2024
Days on Market	509
Zoning	Zone 70

DATA IS DEEMED RELIABLE BUT IS NOT GUARANTEED ACCURATE BY THE REALTORS® ASSOCIATION OF EDMONTON. COPYRIGHT 2025 BY THE REALTORS® ASSOCIATION OF EDMONTON. ALL RIGHTS RESERVED. Trademarks are owned or controlled by the Canadian Real Estate Association (CREA) and identify real estate professionals who are members of CREA (REALTOR®, REALTORS®) and/or the quality of services they provide (MLS®, Multiple Listing Service®)

Listing information last updated on September 13th, 2025 at 8:17pm MDT