

Courtesy Of Trent W Wirsig and Cathy A Pohl Of Moore's Realty Ltd.

## **\$895,000 - On Twp Rd 491a, Rural Brazeau County**

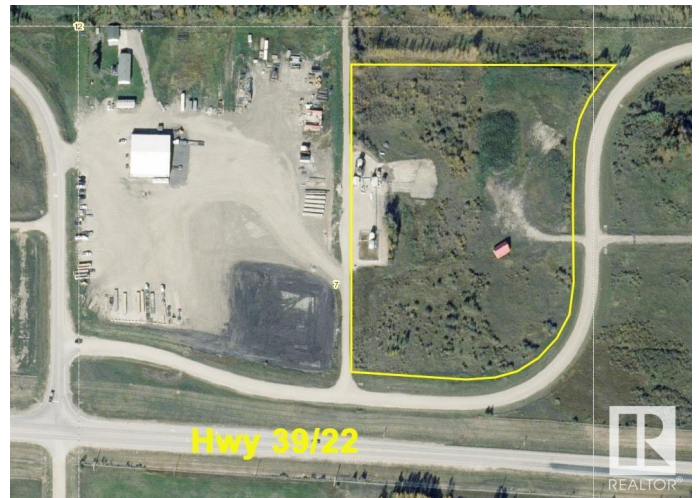
MLS® #E4391013

**\$895,000**

0 Bedroom, 0.00 Bathroom,  
Land Commercial on 0.00 Acres

None, Rural Brazeau County, AB

Awaiting your development - 10 acre parcel zoned Rural Industrial minutes east of Drayton Valley with great access to Hwy39/22. Options are endless with just over an hour to Edmonton it could be a great area to expand your business. Cabin is not owned by seller and therefore is NOT included.



### **Essential Information**

MLS® #	E4391013
Price	\$895,000
Bathrooms	0.00
Acres	0.00
Type	Land Commercial
Status	Active

### **Community Information**

Address	On Twp Rd 491a
Area	Rural Brazeau County
Subdivision	None
City	Rural Brazeau County
County	ALBERTA
Province	AB
Postal Code	T0C 0S0

### **Additional Information**

Date Listed	June 4th, 2024
-------------	----------------

Days on Market 317

Zoning Zone 90

DATA IS DEEMED RELIABLE BUT IS NOT GUARANTEED ACCURATE BY THE REALTORS® ASSOCIATION OF EDMONTON. COPYRIGHT 2025 BY THE REALTORS® ASSOCIATION OF EDMONTON. ALL RIGHTS RESERVED. Trademarks are owned or controlled by the Canadian Real Estate Association (CREA) and identify real estate professionals who are members of CREA (REALTOR®, REALTORS®) and/or the quality of services they provide (MLS®, Multiple Listing Service®)

Listing information last updated on April 17th, 2025 at 6:32am MDT