

\$439,000 - 23229 On Twp 554 A 1/2 Mile West Of Hwy 28a, Gibbons

MLS® #E4414119

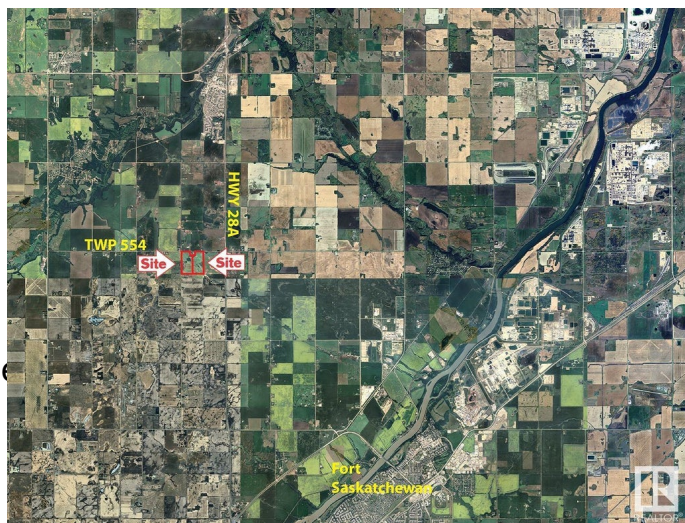
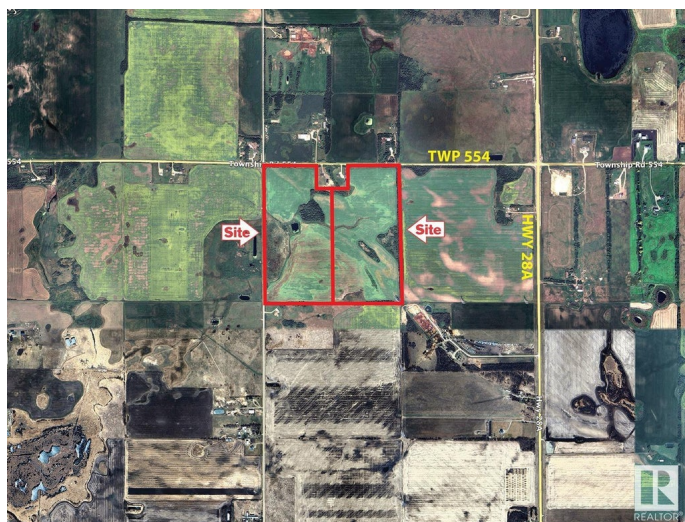
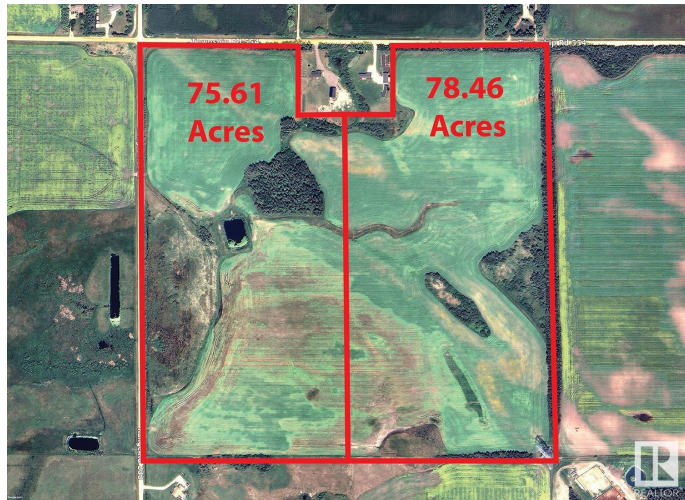
\$439,000

0 Bedroom, 0.00 Bathroom,
Land Commercial on 0.00 Acres

None, Gibbons, AB

The Land is made up of 2 parcels: West:
75.61 Acres: \$439,000 East: 78.46 Acres:
\$456,000 TOTAL: 154.07Acres for \$895,000

Features: - Note: these parcels may be purchased separately or both together. -Inside Edmonton-Gibbons Land Corridor ! -Close to Industrial Heartland and Edmonton. Great for Country Residential Estate or Hobby Farm Development or add to existing farm holdings. -1/2 mile from Major Highway between Edmonton and Fort McMurray !! -Great Road Access from all directions !



Essential Information

MLS® #	E4414119
Price	\$439,000
Bathrooms	0.00
Acres	0.00
Type	Land Commercial
Status	Active

Community Information

Address	23229 On Twp 554 A 1/2 Mile
Area	Gibbons
Subdivision	None
City	Gibbons

County	ALBERTA
Province	AB
Postal Code	T0A 0A7

Additional Information

Date Listed	November 20th, 2024
Days on Market	139
Zoning	Zone 60

DATA IS DEEMED RELIABLE BUT IS NOT GUARANTEED ACCURATE BY THE REALTORS® ASSOCIATION OF EDMONTON. COPYRIGHT 2025 BY THE REALTORS® ASSOCIATION OF EDMONTON. ALL RIGHTS RESERVED. Trademarks are owned or controlled by the Canadian Real Estate Association (CREA) and identify real estate professionals who are members of CREA (REALTOR®, REALTORS®) and/or the quality of services they provide (MLS®, Multiple Listing Service®)

Listing information last updated on April 8th, 2025 at 2:47am MDT