

# **\$379,000 - 16338 Township Road 675, Rural Lac La Biche County**

MLS® #E4416624

**\$379,000**

4 Bedroom, 3.00 Bathroom, 1,383 sqft

Rural on 2.59 Acres

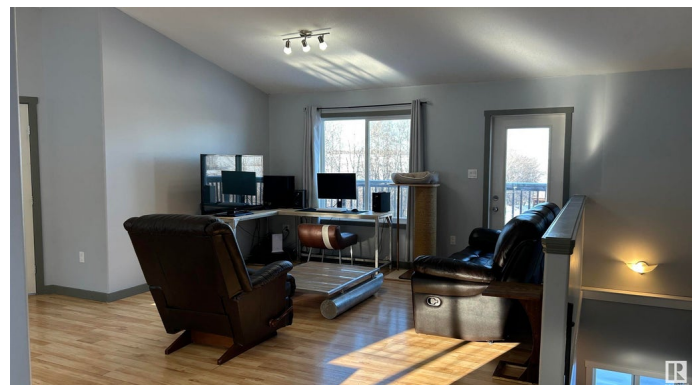
Plamondon Bay, Rural Lac La Biche County, AB

Nestled near Plamondon and close to Lac La Biche, this charming bungalow-style home offers serene living with a walk-out basement and breathtaking views of pastures in the valley below. The heated detached garage provides ample warm storage for two vehicles and outdoor toys. With an open-plan three-bedroom layout, there is plenty of opportunity for family gatherings or entertaining friends. A wrap-around deck offers ample of sunny spots all through the warmer months and the half finished basement is perfect for additional living space or a potential secondary suite. This is an outdoor enthusiast's dream, offering easy access to skidooing, snowshoeing, fishing, and abundant wildlife in a quiet neighborhood. If you feel it is time to escape to the country this property ticks all the boxes.

Built in 2010

## **Essential Information**

MLS® #	E4416624
Price	\$379,000
Bedrooms	4
Bathrooms	3.00



Full Baths	3
Square Footage	1,383
Acres	2.59
Year Built	2010
Type	Rural
Sub-Type	Detached Single Family
Style	Bungalow
Status	Active

### Community Information

Address	16338 Township Road 675
Area	Rural Lac La Biche County
Subdivision	Plamondon Bay
City	Rural Lac La Biche County
County	ALBERTA
Province	AB
Postal Code	T0A 2T0

### Amenities

Features	Ceiling 9 ft.
----------	---------------

### Interior

Interior Features	ensuite bathroom
Heating	Forced Air-1, Natural Gas
Stories	1
Has Basement	Yes
Basement	Full, Partially Finished

### Exterior

Exterior	Concrete
Exterior Features	See Remarks
Construction	Concrete
Foundation	Concrete Perimeter

### Additional Information

Date Listed	December 22nd, 2024
Days on Market	179
Zoning	Zone 60

DATA IS DEEMED RELIABLE BUT IS NOT GUARANTEED ACCURATE BY THE REALTORS® ASSOCIATION OF

EDMONTON. COPYRIGHT 2025 BY THE REALTORS® ASSOCIATION OF EDMONTON. ALL RIGHTS RESERVED.Trademarks are owned or controlled by the Canadian Real Estate Association (CREA) and identify real estate professionals who are members of CREA (REALTOR®, REALTORS®) and/or the quality of services they provide (MLS®, Multiple Listing Service®)

Listing information last updated on June 19th, 2025 at 4:32pm MDT