

\$799,975 - 20255 And 20256 Highway 14, Rural Strathcona County

MLS® #E4420587

\$799,975

0 Bedroom, 0.00 Bathroom,
Rural on 145.78 Acres

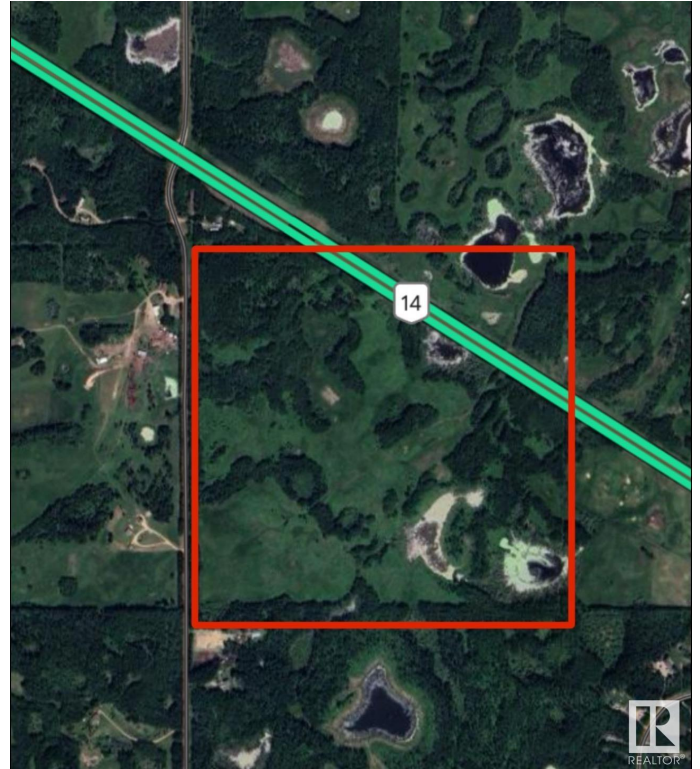
None, Rural Strathcona County, AB

INCREDIBLE OPPORTUNITY! Beautiful, partially treed and rolling pasture land 23 minutes southeast of Sherwood Park, offered for sale for the first time outside of the family in many decades!! HWY 14 was expropriated out of this 161 acre quarter, leaving 145.78 on just 1 title. Approximately 13 acres is on the north side of the highway with an approach address of 20255 HWY 14. Approximately 132 acres is on the south side and is super private! An approach off the highway is 20256 HWY 14 & one on the west side is 51129 Range Road 203. Strathcona County MIGHT permit the subdivision of the north piece out AND MIGHT allow splitting the south part into 2, so in effect creating 3 potential parcels and titles.

Essential Information

| | |
|-----------|-----------------|
| MLS® # | E4420587 |
| Price | \$799,975 |
| Bathrooms | 0.00 |
| Acres | 145.78 |
| Type | Rural |
| Sub-Type | Vacant Lot/Land |
| Status | Active |

Community Information



| | |
|-------------|----------------------------|
| Address | 20255 And 20256 Highway 14 |
| Area | Rural Strathcona County |
| Subdivision | None |
| City | Rural Strathcona County |
| County | ALBERTA |
| Province | AB |
| Postal Code | T0B 4J0 |

Exterior

| | |
|-------------------|-------------------------|
| Exterior Features | Rolling Land, Treed Lot |
|-------------------|-------------------------|

Additional Information

| | |
|----------------|--------------------|
| Date Listed | February 6th, 2025 |
| Days on Market | 106 |
| Zoning | Zone 60 |

DATA IS DEEMED RELIABLE BUT IS NOT GUARANTEED ACCURATE BY THE REALTORS® ASSOCIATION OF EDMONTON. COPYRIGHT 2025 BY THE REALTORS® ASSOCIATION OF EDMONTON. ALL RIGHTS RESERVED. Trademarks are owned or controlled by the Canadian Real Estate Association (CREA) and identify real estate professionals who are members of CREA (REALTOR®, REALTORS®) and/or the quality of services they provide (MLS®, Multiple Listing Service®)

Listing information last updated on May 23rd, 2025 at 6:32am MDT