

\$984,900 - 532027 Range Road 180, Rural Lamont County

MLS® #E4423395

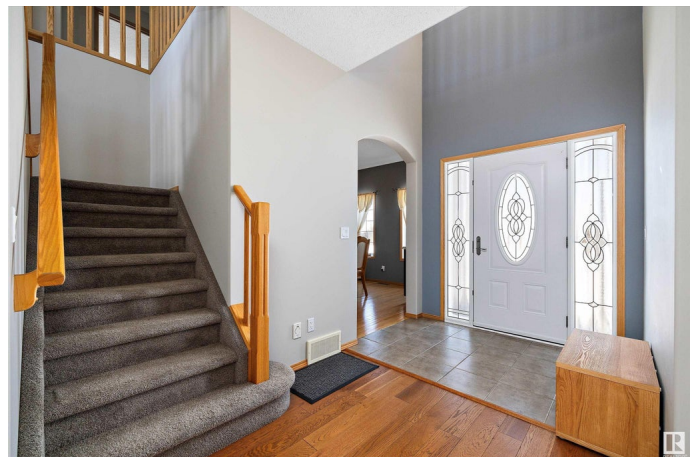
\$984,900

5 Bedroom, 3.50 Bathroom, 2,883 sqft

Rural on 80.00 Acres

None, Rural Lamont County, AB

This immaculate custom-built 2883 sq ft two storey home is on the market for the first time. Sitting on 80 fully fenced acres, it is a horse lover's dream. Built in 2006, it features an open concept design with a stunning tall ceiling in the living room, a beautiful staircase, and large windows bringing in natural light. The living room has an elegant rock wall, a gas fireplace, and hardwood flooring, while the main entrance and kitchen have ceramic tile. The kitchen features granite countertops, a ceramic backsplash, stainless steel appliances, an eat-up bar, and a dining area with picturesque views. Upstairs are four oversized bedrooms, including a primary with a four piece ensuite. The finished basement offers a wood-burning fireplace, a fifth bedroom, in-floor heating, laundry, and utility room. Outside has a 24x36 barn with lean-to storage, 30x40 shop with 220V, 22x24 garage, plus a double attached garage. The hot tub solarium is the perfect touch.



Built in 2006

Essential Information

MLS® #	E4423395
Price	\$984,900
Bedrooms	5

Bathrooms	3.50
Full Baths	3
Half Baths	1
Square Footage	2,883
Acres	80.00
Year Built	2006
Type	Rural
Sub-Type	Detached Single Family
Style	2 Storey
Status	Active

Community Information

Address	532027 Range Road 180
Area	Rural Lamont County
Subdivision	None
City	Rural Lamont County
County	ALBERTA
Province	AB
Postal Code	T0B 3H0

Amenities

Features	Gazebo, Hot Tub, No Smoking Home, R.V. Storage
----------	--

Interior

Interior Features	ensuite bathroom
Heating	Forced Air-1, Natural Gas
Stories	3
Has Basement	Yes
Basement	Full, Finished

Exterior

Exterior	Wood
Exterior Features	Fenced, Landscaped
Construction	Wood
Foundation	Concrete Perimeter

Additional Information

Date Listed	February 28th, 2025
Days on Market	52

Zoning

Zone 60

DATA IS DEEMED RELIABLE BUT IS NOT GUARANTEED ACCURATE BY THE REALTORS® ASSOCIATION OF EDMONTON. COPYRIGHT 2025 BY THE REALTORS® ASSOCIATION OF EDMONTON. ALL RIGHTS RESERVED. Trademarks are owned or controlled by the Canadian Real Estate Association (CREA) and identify real estate professionals who are members of CREA (REALTOR®, REALTORS®) and/or the quality of services they provide (MLS®, Multiple Listing Service®)

Listing information last updated on April 21st, 2025 at 9:02am MDT