

\$599,900 - 6 Dorais Way, Fort Saskatchewan

MLS® #E4425611

\$599,900

3 Bedroom, 2.50 Bathroom, 2,205 sqft

Single Family on 0.00 Acres

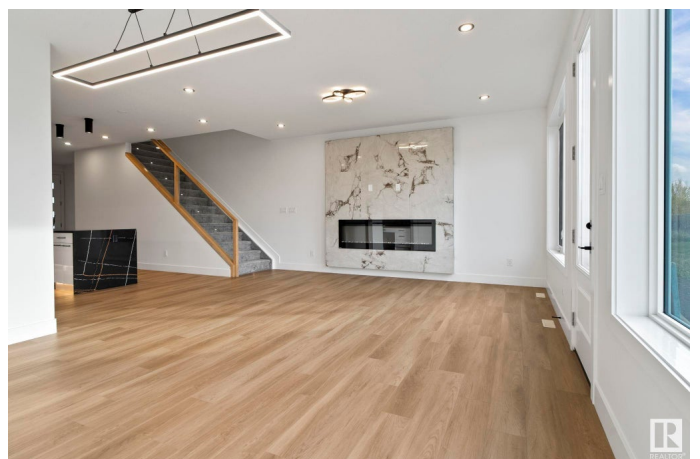
South Pointe, Fort Saskatchewan, AB

This beautiful 2,205 sq. ft. family residence on a Regular Lot seamlessly combines modern elegance with functionality. Backing onto walking trails. Featuring three generous bedrooms and 2.5 bathrooms, it's an ideal choice for a growing family. The main floor includes a built-in office, providing a perfect workspace for remote work. The open-concept kitchen flows effortlessly into a bright living room and dining area, making it suitable for everyday living as well as entertaining guests. A convenient half bath is also located on this level. Upstairs, you'll find a spacious bonus room, perfect for family movie nights or a cozy retreat. The luxurious master suite includes a 5-piece ensuite, featuring a custom shower and a standalone tub, creating a spa-like atmosphere. Two additional bedrooms and a full bathroom round out the upper level. Just a short walk from the local school, this home offers unparalleled convenience for families with children, making it a must-see!

Built in 2023

Essential Information

MLS® #	E4425611
Price	\$599,900
Bedrooms	3
Bathrooms	2.50



Full Baths	2
Half Baths	1
Square Footage	2,205
Acres	0.00
Year Built	2023
Type	Single Family
Sub-Type	Detached Single Family
Style	2 Storey
Status	Active

Community Information

Address	6 Dorais Way
Area	Fort Saskatchewan
Subdivision	South Pointe
City	Fort Saskatchewan
County	ALBERTA
Province	AB
Postal Code	T8L 0X3

Amenities

Amenities	Ceiling 9 ft., Closet Organizers, Detectors Smoke, Hot Water Tankless, 9 ft. Basement Ceiling
Parking	Double Garage Attached

Interior

Interior Features	ensuite bathroom
Appliances	Dishwasher-Built-In, Dryer, Hood Fan, Oven-Microwave, Refrigerator, Stove-Countertop Electric
Heating	Forced Air-1, Natural Gas
Fireplace	Yes
Fireplaces	Tile Surround
Stories	2
Has Basement	Yes
Basement	Full, Unfinished

Exterior

Exterior	Wood, Vinyl
Exterior Features	Backs Onto Park/Trees, Playground Nearby, Public Transportation, See Remarks

Roof	Asphalt Shingles
Construction	Wood, Vinyl
Foundation	Concrete Perimeter

Additional Information

Date Listed	March 13th, 2025
-------------	------------------

Days on Market	35
----------------	----

Zoning	Zone 62
--------	---------

DATA IS DEEMED RELIABLE BUT IS NOT GUARANTEED ACCURATE BY THE REALTORS® ASSOCIATION OF EDMONTON. COPYRIGHT 2025 BY THE REALTORS® ASSOCIATION OF EDMONTON. ALL RIGHTS RESERVED. Trademarks are owned or controlled by the Canadian Real Estate Association (CREA) and identify real estate professionals who are members of CREA (REALTOR®, REALTORS®) and/or the quality of services they provide (MLS®, Multiple Listing Service®)

Listing information last updated on April 16th, 2025 at 11:47pm MDT