

\$819,000 - 14 Everest Crescent, St. Albert

MLS® #E4425649

\$819,000

4 Bedroom, 3.00 Bathroom, 1,899 sqft
Single Family on 0.00 Acres

Erin Ridge, St. Albert, AB

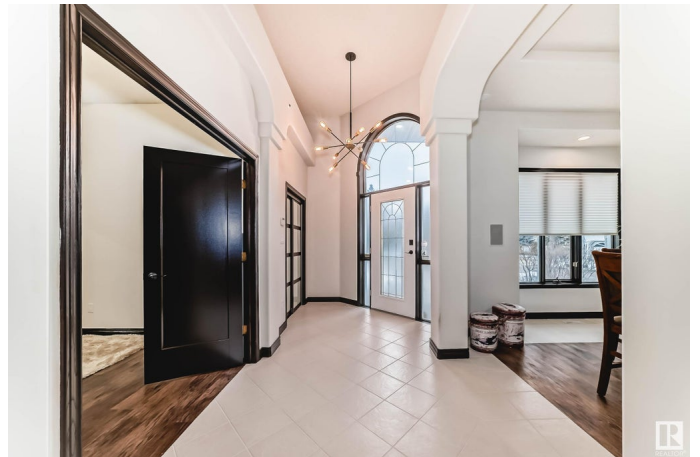
Exceptional Value!! This fully finished executive walkout bungalow by Design Innovations is located at the high point in Erin Ridge Greens, offering stunning views of Sturgeon Valley below. With 3,676 sq. ft. of developed living space, the open main floor features soaring 13-ft ceilings, perfect for entertaining. The luxurious primary bedroom suite includes a fireplace, spa-like ensuite, and private deck access—your personal retreat. Highlights include a formal dining room, bar area, den, and a spacious living room open to the gourmet kitchen. The lower walkout level is an entertainer’s dream with large windows, fireplace, heated floors, bar, den, 2 generous guest rooms, and full bath. Step outside to a beautiful oasis with a private covered deck and artificial lawn for low-maintenance enjoyment. The heated o/s triple attached garage (36’x22’) is equipped with hot/cold taps, a floor drain and man door. New pex lines throughout, built-in speakers and dumb waiter add that extra flair for worry free living!

Built in 1992

Essential Information

MLS® # E4425649

Price \$819,000



Bedrooms	4
Bathrooms	3.00
Full Baths	3
Square Footage	1,899
Acres	0.00
Year Built	1992
Type	Single Family
Sub-Type	Detached Single Family
Style	Bungalow
Status	Active

Community Information

Address	14 Everest Crescent
Area	St. Albert
Subdivision	Erin Ridge
City	St. Albert
County	ALBERTA
Province	AB
Postal Code	T8N 6C3

Amenities

Amenities	Air Conditioner, Bar, Detectors Smoke, Patio, Sprinkler Sys-Underground, Vaulted Ceiling, Walkout Basement
Parking	Heated, Insulated, Over Sized, Triple Garage Attached

Interior

Interior Features	ensuite bathroom
Appliances	Air Conditioning-Central, Dishwasher-Built-In, Garage Control, Garage Opener, Oven-Built-In, Oven-Microwave, Refrigerator, Stove-Countertop Electric, Window Coverings, See Remarks, TV Wall Mount
Heating	Forced Air-1, In Floor Heat System, Natural Gas
Fireplace	Yes
Fireplaces	Glass Door, Mantel, Tile Surround
Stories	2
Has Basement	Yes
Basement	Full, Finished

Exterior

Exterior	Wood, Stucco
----------	--------------

Exterior Features	Fenced, Landscaped, Playground Nearby, Public Transportation, Schools, Shopping Nearby
Roof	Asphalt Shingles
Construction	Wood, Stucco
Foundation	Concrete Perimeter

Additional Information

Date Listed March 14th, 2025

Zoning Zone 24

DATA IS DEEMED RELIABLE BUT IS NOT GUARANTEED ACCURATE BY THE REALTORS® ASSOCIATION OF EDMONTON. COPYRIGHT 2025 BY THE REALTORS® ASSOCIATION OF EDMONTON. ALL RIGHTS RESERVED. Trademarks are owned or controlled by the Canadian Real Estate Association (CREA) and identify real estate professionals who are members of CREA (REALTOR®, REALTORS®) and/or the quality of services they provide (MLS®, Multiple Listing Service®)

Listing information last updated on March 14th, 2025 at 6:17pm MDT