

\$849,900 - 28 51526 Rge Road 273, Rural Parkland County

MLS® #E4427746

\$849,900

4 Bedroom, 3.00 Bathroom, 1,636 sqft
Rural on 3.00 Acres

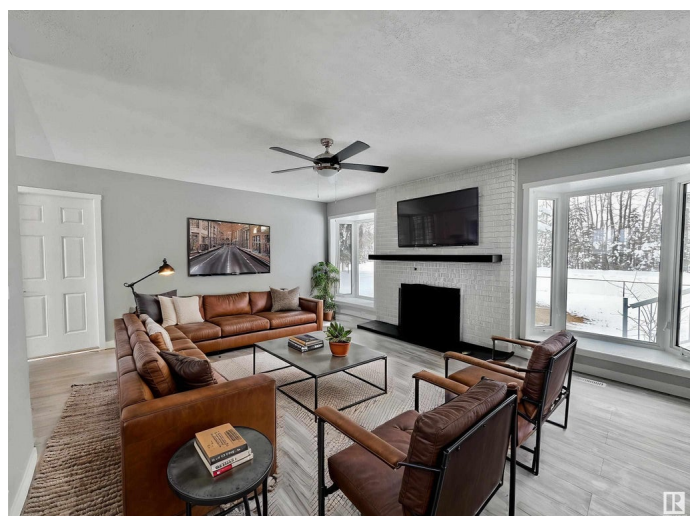
Mallard Park, Rural Parkland County, AB

LOOKING FOR AN ACREAGE CLOSE TO TOWN WITH A SHOP? WANTING PRIVACY, TREES BUT STILL EASY ACCESS TO WORK? WANT A HOME THAT IS RENOVATED PLUS A/C? THEN THIS IS IT!

As you walk through the huge mud room, you'll notice the BRAND NEW KITCHEN! Tons of gorgeous white cabinetry, white subway tile & a ton of counterspace. The living room is HUGE, w/ tons of natural lighting from the huge windows that frame the breathtaking wood burning FP! As you follow the laminate flooring down the hallway, you are greeted by a spacious 5pc. main bath. Also on this floor are 3 BDRMS w/ the primary bdrm. fit for a Queen, w/ a huge corner walk-in closet, corner gas f/p & a breathtaking 4pc. ensuite w/ his & her sinks. Also featured in the primary bdrm are garden doors that open out to the North facing deck, with views of your 3 acres of treed privacy. The FINISHED BSMT has so much to offer as well! A huge rec/family room, 2 office/flex rooms, a large bdrm, massive laundry & a 3pc. bath. PLUS AC! & A 32X42 HEATED SHOP W/ FOAM INSUL.

Built in 1974

Essential Information



MLS® #	E4427746
Price	\$849,900
Bedrooms	4
Bathrooms	3.00
Full Baths	3
Square Footage	1,636
Acres	3.00
Year Built	1974
Type	Rural
Sub-Type	Detached Single Family
Style	Bungalow
Status	Active

Community Information

Address	28 51526 Rge Road 273
Area	Rural Parkland County
Subdivision	Mallard Park
City	Rural Parkland County
County	ALBERTA
Province	AB
Postal Code	T7Y 1H7

Amenities

Features	Air Conditioner, Deck, Vinyl Windows, Workshop
----------	--

Interior

Interior Features	ensuite bathroom
Heating	Forced Air-1, In Floor Heat System, Natural Gas, Water
Fireplace	Yes
Stories	2
Has Basement	Yes
Basement	Full, Finished

Exterior

Exterior	Wood
Exterior Features	Backs Onto Lake, Environmental Reserve, Park/Reserve, Treed Lot, See Remarks, Partially Fenced
Construction	Wood
Foundation	Concrete Perimeter

Additional Information

Date Listed March 27th, 2025

Days on Market 7

Zoning Zone 90

DATA IS DEEMED RELIABLE BUT IS NOT GUARANTEED ACCURATE BY THE REALTORS® ASSOCIATION OF EDMONTON. COPYRIGHT 2025 BY THE REALTORS® ASSOCIATION OF EDMONTON. ALL RIGHTS RESERVED. Trademarks are owned or controlled by the Canadian Real Estate Association (CREA) and identify real estate professionals who are members of CREA (REALTOR®, REALTORS®) and/or the quality of services they provide (MLS®, Multiple Listing Service®)

Listing information last updated on April 3rd, 2025 at 2:32pm MDT