

\$156,000 - 126 1180 Hyndman Road, Edmonton

MLS® #E4428310

\$156,000

2 Bedroom, 2.00 Bathroom, 904 sqft
Condo / Townhouse on 0.00 Acres

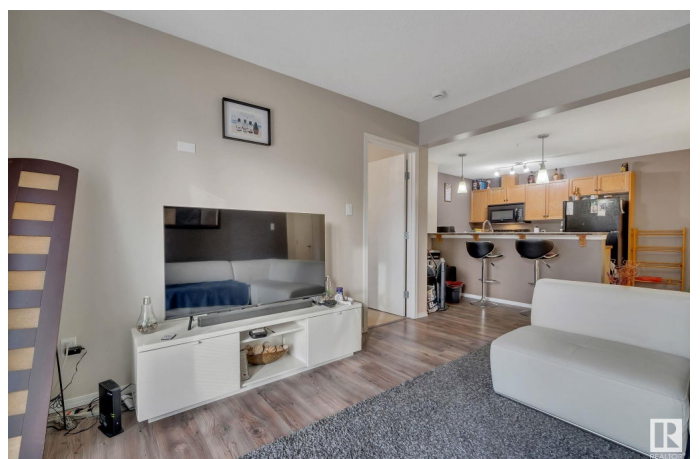
Canon Ridge, Edmonton, AB

Beautiful main-floor condo in the scenic river valley! This 2-bedroom, 2-bathroom unit features an open-concept kitchen, dining, and living area with upgraded LVP flooring throughout. The oak kitchen offers a bar-style counter and sleek black Whirlpool appliances. The spacious primary bedroom includes a walk-through closet leading to a 4-piece ensuite, while the custom-designed second bedroom is perfect for a nursery, second bedroom or office. Additional highlights include upgraded electrical with Decora switches and dimmers, in-suite laundry with a stacking front-loading washer/dryer, and a private patio with landscaping. The titled parking stall comes with an in-suite controlled electric plug-in. Conveniently located near public transit, schools, shopping centers, and beautiful Hermitage and Rundle Park.

Built in 2008

Essential Information

MLS® #	E4428310
Price	\$156,000
Bedrooms	2
Bathrooms	2.00
Full Baths	2
Square Footage	904
Acres	0.00



Year Built	2008
Type	Condo / Townhouse
Sub-Type	Lowrise Apartment
Style	Single Level Apartment
Status	Active

Community Information

Address	126 1180 Hyndman Road
Area	Edmonton
Subdivision	Canon Ridge
City	Edmonton
County	ALBERTA
Province	AB
Postal Code	T5A 0P8

Amenities

Amenities	No Smoking Home, Storage-In-Suite
Parking Spaces	1
Parking	Stall

Interior

Interior Features	ensuite bathroom
Appliances	Dishwasher-Built-In, Dryer, Microwave Hood Fan, Refrigerator, Stove-Electric, Washer, Window Coverings
Heating	Baseboard, Hot Water, Natural Gas
# of Stories	4
Stories	1

Exterior

Exterior	Wood, Vinyl
Exterior Features	Park/Reserve, Public Transportation, Schools, Shopping Nearby
Roof	Asphalt Shingles
Construction	Wood, Vinyl
Foundation	Concrete Perimeter

Additional Information

Date Listed	March 28th, 2025
Days on Market	6
Zoning	Zone 35

Condo Fee \$517

DATA IS DEEMED RELIABLE BUT IS NOT GUARANTEED ACCURATE BY THE REALTORS® ASSOCIATION OF EDMONTON. COPYRIGHT 2025 BY THE REALTORS® ASSOCIATION OF EDMONTON. ALL RIGHTS RESERVED. Trademarks are owned or controlled by the Canadian Real Estate Association (CREA) and identify real estate professionals who are members of CREA (REALTOR®, REALTORS®) and/or the quality of services they provide (MLS®, Multiple Listing Service®)

Listing information last updated on April 3rd, 2025 at 11:47am MDT