

\$849,900 - 6 Lafleur Drive, St. Albert

MLS® #E4428530

\$849,900

4 Bedroom, 3.00 Bathroom, 1,812 sqft
Single Family on 0.00 Acres

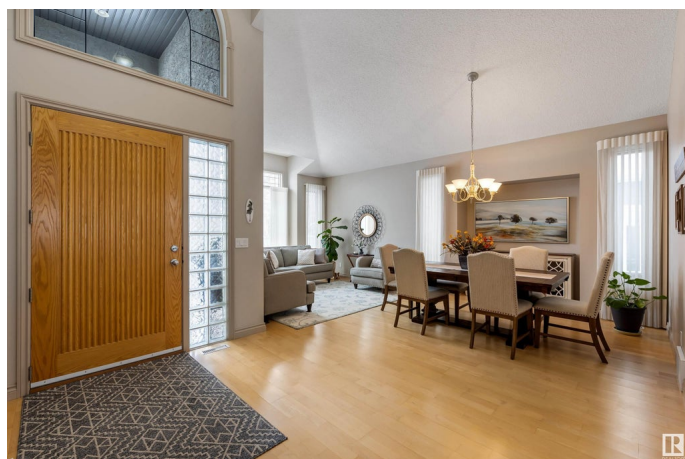
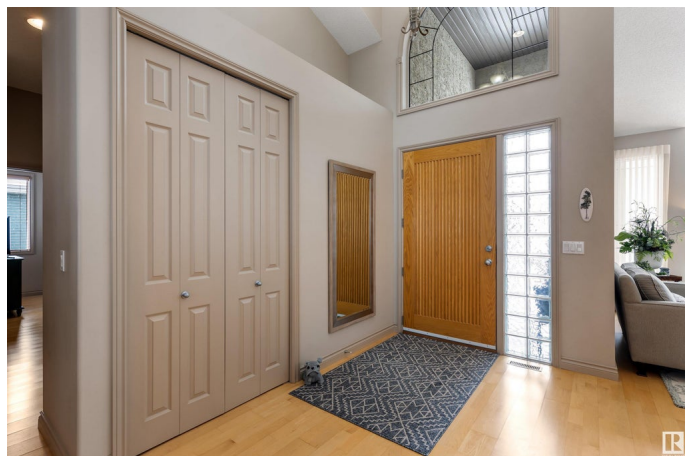
Lacombe Park, St. Albert, AB

This stunning 1811 sqft bungalow is nestled in desirable Lacombe Park Estates, backing south onto a picturesque park! Featuring 4 bedrooms, the home boasts a spacious front entrance that leads into the inviting living & dining rooms, where vaulted ceilings, custom framing & large windows create an open airy feel. The kitchen is a true chef's paradise, equipped w/ a large island, corner pantry, granite countertops, newer s/s appliances (including dual ovens), tile backsplash, & a fantastic view of the park. The expansive great room offers a cozy gas f/p, surrounded by stacked stone that stretches up to the vaulted ceiling. The primary bedroom is a tranquil retreat w/ a generous walk-in closet & a luxurious 5pce ensuite. A 2nd bedroom (or office), a 4pce bath & convenient main-floor laundry complete the main level. Downstairs, the fully finished basement features 2 large bedrooms, a 3pce bath & a rec room w/ a 2nd gas f/p. Double attached garage is HEATED & includes a floor drain & hot & cold water.

Built in 2001

Essential Information

MLS® #	E4428530
Price	\$849,900
Bedrooms	4



Bathrooms	3.00
Full Baths	3
Square Footage	1,812
Acres	0.00
Year Built	2001
Type	Single Family
Sub-Type	Detached Single Family
Style	Bungalow
Status	Active

Community Information

Address	6 Lafleur Drive
Area	St. Albert
Subdivision	Lacombe Park
City	St. Albert
County	ALBERTA
Province	AB
Postal Code	T8N 5Y1

Amenities

Amenities	Deck, Vaulted Ceiling, Vinyl Windows, See Remarks
Parking	Double Garage Attached

Interior

Interior Features	ensuite bathroom
Appliances	Air Conditioning-Central, Alarm/Security System, Dishwasher-Built-In, Dryer, Garage Control, Garage Opener, Garburator, Hood Fan, Oven-Microwave, Refrigerator, Stove-Electric, Vacuum System Attachments, Vacuum Systems, Washer, Window Coverings
Heating	Forced Air-1, Natural Gas
Fireplace	Yes
Fireplaces	Corner, Mantel
Stories	2
Has Basement	Yes
Basement	Full, Finished

Exterior

Exterior	Wood, Stucco
Exterior Features	Backs Onto Park/Trees, Fenced, Landscaped, Private Setting, Public

Transportation, Schools, Shopping Nearby, See Remarks

Roof Asphalt Shingles
Construction Wood, Stucco
Foundation Concrete Perimeter

Additional Information

Date Listed April 2nd, 2025
Days on Market 6
Zoning Zone 24

DATA IS DEEMED RELIABLE BUT IS NOT GUARANTEED ACCURATE BY THE REALTORS® ASSOCIATION OF EDMONTON. COPYRIGHT 2025 BY THE REALTORS® ASSOCIATION OF EDMONTON. ALL RIGHTS RESERVED. Trademarks are owned or controlled by the Canadian Real Estate Association (CREA) and identify real estate professionals who are members of CREA (REALTOR®, REALTORS®) and/or the quality of services they provide (MLS®, Multiple Listing Service®)

Listing information last updated on April 8th, 2025 at 3:17am MDT