

# \$99,900 - Se-13-58-7-w4m Hwy 41, Rural St. Paul County

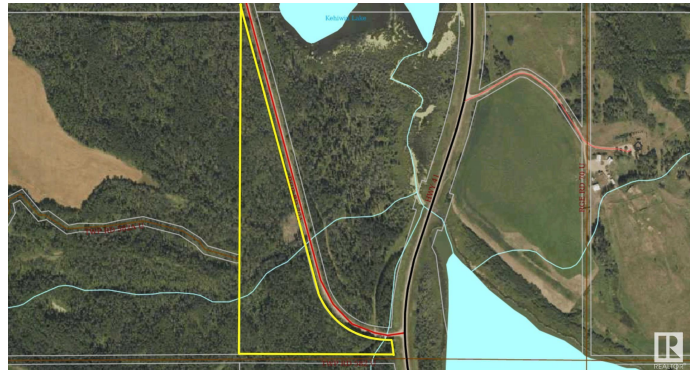
MLS® #E4429381

**\$99,900**

0 Bedroom, 0.00 Bathroom,  
Rural on 24.35 Acres

None, Rural St. Paul County, AB

24+ acres overlooking Kehewin Lake. Corner shaped lot right off highway 41, only minute north of Elk Point, 15 minutes from St. Paul and 20 minutes from Bonnyville. Fully treed with varying topography allows you to build whatever style of home or private cabin you want, whether it's a small tiny home nestled in the trees or large walk out style home looking over the lake! Good fishing, water sports, or just enjoying the views- your new home is here!



## Essential Information

MLS® #	E4429381
Price	\$99,900
Bathrooms	0.00
Acres	24.35
Type	Rural
Sub-Type	Vacant Lot/Land
Status	Active

## Community Information

Address	Se-13-58-7-w4m Hwy 41
Area	Rural St. Paul County
Subdivision	None
City	Rural St. Paul County
County	ALBERTA
Province	AB

Postal Code T0A 0B5

## Exterior

Exterior Features Boating, Hillside, Lake View, Not Fenced

## Additional Information

Date Listed April 5th, 2025

Days on Market 8

Zoning Zone 60

DATA IS DEEMED RELIABLE BUT IS NOT GUARANTEED ACCURATE BY THE REALTORS® ASSOCIATION OF EDMONTON. COPYRIGHT 2025 BY THE REALTORS® ASSOCIATION OF EDMONTON. ALL RIGHTS RESERVED. Trademarks are owned or controlled by the Canadian Real Estate Association (CREA) and identify real estate professionals who are members of CREA (REALTOR®, REALTORS®) and/or the quality of services they provide (MLS®, Multiple Listing Service®)

Listing information last updated on April 13th, 2025 at 4:17am MDT