

Courtesy Of Brenda L Haney Of Panache Realty Ltd.

# **\$199,000 - 15 60528 Rge Rd 464a, Rural Bonnyville M.D.**

MLS® #E4429419

**\$199,000**

3 Bedroom, 0.00 Bathroom, 1,042 sqft

Rural on 0.29 Acres

None, Rural Bonnyville M.D., AB

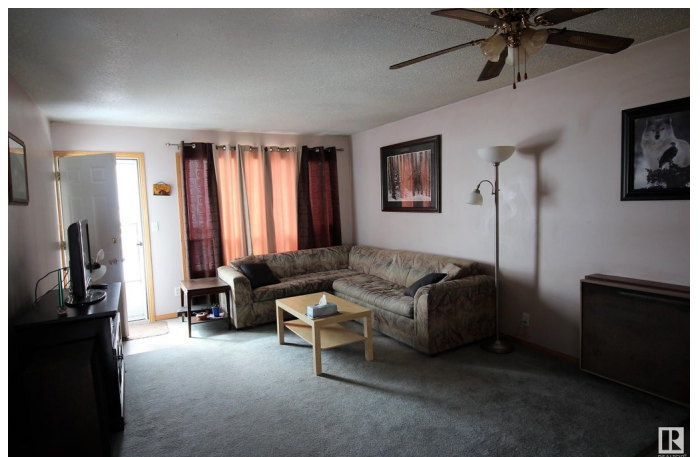
A rare opportunity to own a prime lakefront property on the shores of Moose Lake! Absolutely spectacular southwest views from your deck which overlooks the stunning Bonnyville Beach bay area. This 3 bedroom furnished cabin is the perfect start. Ample size rooms throughout. Just bring your toothbrush and start enjoying long summer days capped off with soothing sunsets right from your deck. Power has been decommissioned. New stairs to access the lake were just installed. Moose Lake life....nothing like it!

Built in 1973

## **Essential Information**

MLS® #	E4429419
Price	\$199,000
Bedrooms	3
Bathrooms	0.00
Square Footage	1,042
Acres	0.29
Year Built	1973
Type	Rural
Sub-Type	Cottage
Style	Bungalow
Status	Active

## **Community Information**



Address	15 60528 Rge Rd 464a
Area	Rural Bonnyville M.D.
Subdivision	None
City	Rural Bonnyville M.D.
County	ALBERTA
Province	AB
Postal Code	T9N 2J6

### **Amenities**

Features	On Street Parking, Deck
----------	-------------------------

### **Interior**

Heating	Space Heater, Natural Gas
Stories	1
Has Basement	Yes
Basement	None, No Basement

### **Exterior**

Exterior	Wood
Exterior Features	Backs Onto Lake, Beach Access, Boating, Hillside, Low Maintenance Landscape, Waterfront Property
Construction	Wood
Foundation	Piling

### **Additional Information**

Date Listed	April 5th, 2025
Days on Market	7
Zoning	Zone 60

DATA IS DEEMED RELIABLE BUT IS NOT GUARANTEED ACCURATE BY THE REALTORS® ASSOCIATION OF EDMONTON. COPYRIGHT 2025 BY THE REALTORS® ASSOCIATION OF EDMONTON. ALL RIGHTS RESERVED. Trademarks are owned or controlled by the Canadian Real Estate Association (CREA) and identify real estate professionals who are members of CREA (REALTOR®, REALTORS®) and/or the quality of services they provide (MLS®, Multiple Listing Service®)

Listing information last updated on April 12th, 2025 at 6:02pm MDT