

\$499,000 - 45 61076 Twp 462 A, Rural Wetaskiwin County

MLS® #E4431341

\$499,000

3 Bedroom, 2.00 Bathroom, 1,115 sqft

Rural on 0.60 Acres

Buck Lake, Rural Wetaskiwin County, AB

Discover your perfect escape at Buck Lake, and just under 2 hours from downtown Edmonton. This charming 3-bedroom, 1.5-bathroom cabin, built in 1979 and lovingly maintained by its original owners, is now available. Situated on a 0.59-acre lakefront lot, this property offers unparalleled tranquility and is perfect for year-round enjoyment. Prime Location: Lakefront property with stunning views and serene surroundings. Main Cabin: Cozy and well-kept, ready for you to move in and start making memories. Double Garage: Includes a bunkhouse for extra guests and a separate space for storing your toys. Modern Conveniences: Equipped with natural gas and power, making it a 4-season getaway.

Potential for Dock: With a simple Walking Trail application from Wetaskiwin County, you could easily add a dock for direct lake access.

Don't miss out on this rare opportunity to own a slice of paradise. Adjacent property also listed. ML#E4431344 @ \$199,000.00

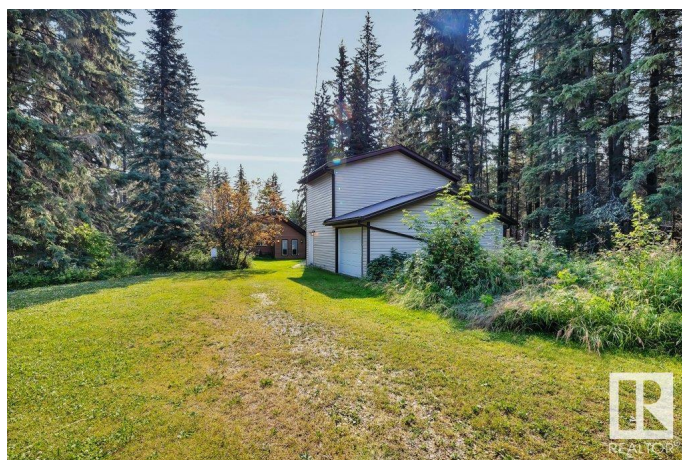
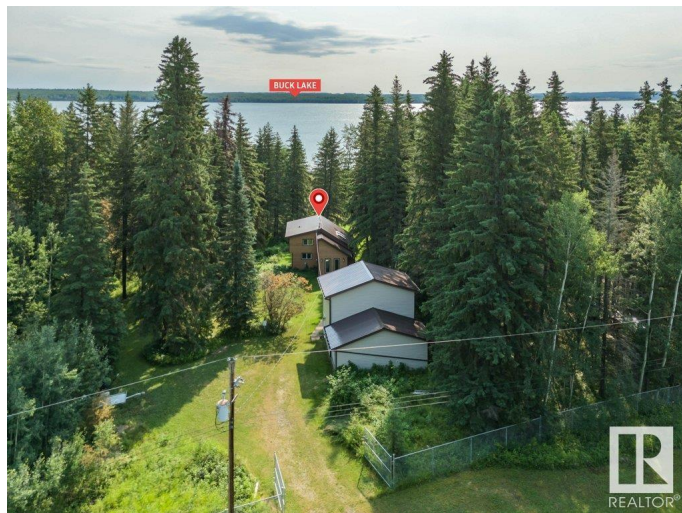
Built in 1979

Essential Information

MLS® # E4431341

Price \$499,000

Bedrooms 3



Bathrooms	2.00
Full Baths	2
Square Footage	1,115
Acres	0.60
Year Built	1979
Type	Rural
Sub-Type	Cottage
Style	2 Storey
Status	Active

Community Information

Address	45 61076 Twp 462 A
Area	Rural Wetaskiwin County
Subdivision	Buck Lake
City	Rural Wetaskiwin County
County	ALBERTA
Province	AB
Postal Code	T0C 0T0

Amenities

Features	Deck, Fire Pit, Guest Suite
----------	-----------------------------

Interior

Heating	Forced Air-1, Natural Gas
Stories	3
Has Basement	Yes
Basement	Partial, Finished

Exterior

Exterior	Wood
Exterior Features	Backs Onto Lake, Lake Access Property, Lake View, Private Setting, Recreation Use, Waterfront Property
Construction	Wood
Foundation	Concrete Perimeter

Additional Information

Date Listed	April 17th, 2025
Days on Market	70
Zoning	Zone 96

DATA IS DEEMED RELIABLE BUT IS NOT GUARANTEED ACCURATE BY THE REALTORS® ASSOCIATION OF EDMONTON. COPYRIGHT 2025 BY THE REALTORS® ASSOCIATION OF EDMONTON. ALL RIGHTS RESERVED.Trademarks are owned or controlled by the Canadian Real Estate Association (CREA) and identify real estate professionals who are members of CREA (REALTOR®, REALTORS®) and/or the quality of services they provide (MLS®, Multiple Listing Service®)

Listing information last updated on June 26th, 2025 at 3:33pm MDT