

\$400,000 - 51 215 Saddleback Road, Edmonton

MLS® #E4431617

\$400,000

3 Bedroom, 2.50 Bathroom, 1,213 sqft
Condo / Townhouse on 0.00 Acres

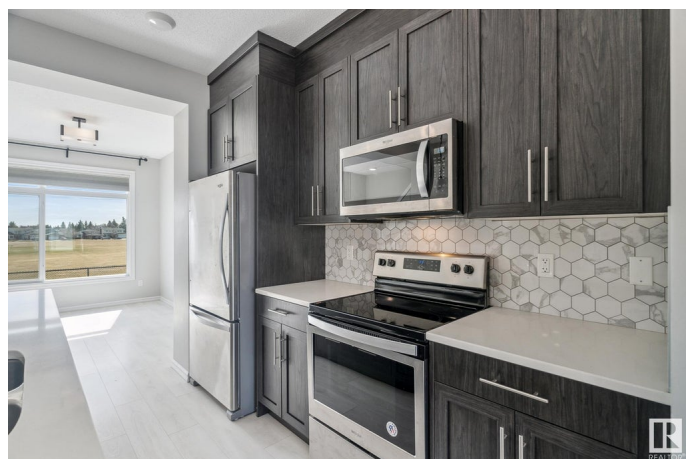
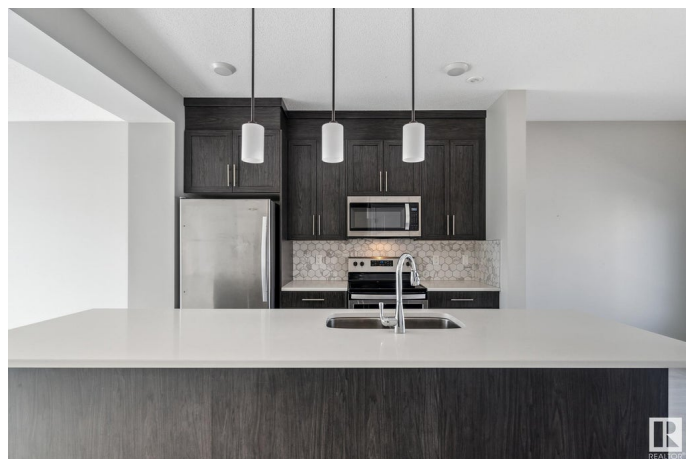
Blue Quill, Edmonton, AB

You can't beat the location of this stunning 2018 Landmark-built townhouse! Just a short walk to the LRT and nearby elementary schools, this end unit also backs directly onto beautiful Blue Quill Park, giving you a rare south-facing backyard view. Inside, you'll find a spacious, king-sized primary bedroom, two additional bedrooms upstairs, and a double attached garage. The upgraded kitchen features full-height cabinetry, a stylish backsplash, stainless steel appliances, and sleek quartz countertops. This home is immaculate and feels like new! The fully fenced front yard is ideal for pets, and the lawn maintenance is taken care of by the condo board—talk about easy living. Bonus: there's extra storage space in the basement, making this home the perfect mix of comfort, convenience, and value. **some photos are virtually staged

Built in 2018

Essential Information

MLS® #	E4431617
Price	\$400,000
Bedrooms	3
Bathrooms	2.50
Full Baths	2
Half Baths	1



Square Footage	1,213
Acres	0.00
Year Built	2018
Type	Condo / Townhouse
Sub-Type	Townhouse
Style	2 Storey
Status	Active

Community Information

Address	51 215 Saddleback Road
Area	Edmonton
Subdivision	Blue Quill
City	Edmonton
County	ALBERTA
Province	AB
Postal Code	T6J 5T6

Amenities

Amenities	Ceiling 9 ft., Hot Water Tankless, No Smoking Home, Parking-Visitor, Vinyl Windows, HRV System
Parking Spaces	2
Parking	Double Garage Attached

Interior

Interior Features	ensuite bathroom
Appliances	Dishwasher-Built-In, Dryer, Garage Control, Garage Opener, Microwave Hood Fan, Refrigerator, Stove-Electric, Washer
Heating	Forced Air-1, Natural Gas
Stories	3
Has Basement	Yes
Basement	Partial, Finished

Exterior

Exterior	Wood, Vinyl
Exterior Features	Airport Nearby, Backs Onto Park/Trees, Fenced, Landscaped, Playground Nearby, Public Transportation, Schools, Shopping Nearby
Roof	Asphalt Shingles
Construction	Wood, Vinyl
Foundation	Concrete Perimeter

School Information

Elementary	Sweetgrass Elementary
Middle	Vernon Barford
High	Harry Ainley

Additional Information

Date Listed	April 18th, 2025
Days on Market	7
Zoning	Zone 16
Condo Fee	\$244

DATA IS DEEMED RELIABLE BUT IS NOT GUARANTEED ACCURATE BY THE REALTORS® ASSOCIATION OF EDMONTON. COPYRIGHT 2025 BY THE REALTORS® ASSOCIATION OF EDMONTON. ALL RIGHTS RESERVED. Trademarks are owned or controlled by the Canadian Real Estate Association (CREA) and identify real estate professionals who are members of CREA (REALTOR®, REALTORS®) and/or the quality of services they provide (MLS®, Multiple Listing Service®)

Listing information last updated on April 25th, 2025 at 1:02am MDT