

## \$624,900 - 78 Wilkinson Place, Leduc

MLS® #E4432814

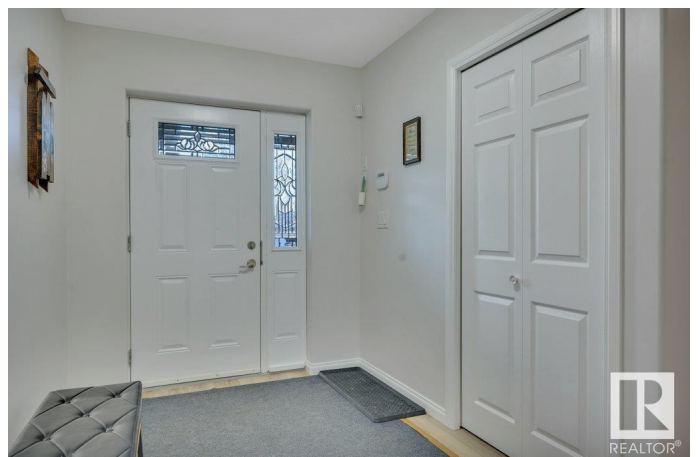
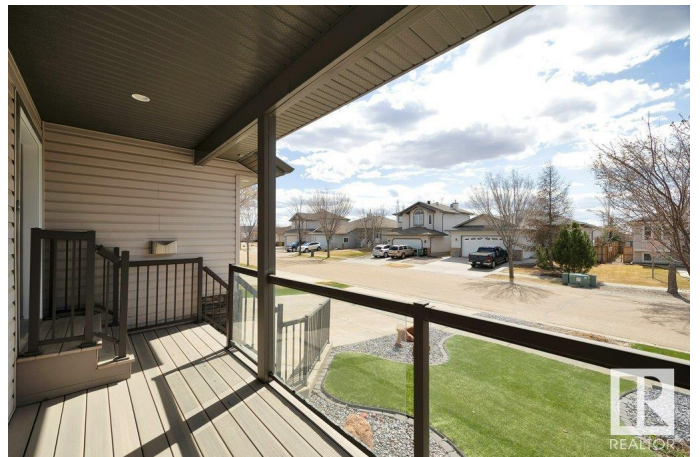
**\$624,900**

5 Bedroom, 3.00 Bathroom, 1,645 sqft  
Single Family on 0.00 Acres

Windrose, Leduc, AB

WOW! Step into style, space & comfort with this HIDDEN GEM tucked away in the highly sought-after community of WINDROSE. This beautifully upgraded 1,645 SQ FT BUNGALOW offers over 3,000 SQ FT of TOTAL LIVING SPACE with VINYL PLANK FLOORING THROUGHOUT. The LOW MAINTENANCE FRONT & BACK YARD features ARTIFICIAL TURF, MODERN GLASS RAILINGS & direct access BACKING ONTO THE PARK. Enjoy year-round comfort with AIR CONDITIONING, HEATED BASEMENT FLOORS, a DOUBLE ATTACHED GARAGE WITH HEATED FLOOR & SHINGLES REPLACED IN 2022. Inside, the MAIN FLOOR showcases VAULTED CEILINGS, a LARGE LIVING ROOM with GAS FIREPLACE & a SPACIOUS KITCHEN with AMPLE STORAGE. There are 3 BEDROOMS, including a relaxing PRIMARY RETREAT with 4PC ENSUITE, plus an additional 4PC BATHROOM. The FULLY FINISHED BASEMENT offers a MASSIVE FAMILY ROOM with FIREPLACE, a HUGE WET BAR that could double as a SECOND KITCHEN, 2 LARGE BEDROOMS & a DEN. Ideally located CLOSE TO SCHOOLS, PARKS & ALL AMENITIES—this home truly has it all!

Built in 2005



## Essential Information

MLS® #	E4432814
Price	\$624,900
Bedrooms	5
Bathrooms	3.00
Full Baths	3
Square Footage	1,645
Acres	0.00
Year Built	2005
Type	Single Family
Sub-Type	Detached Single Family
Style	Bungalow
Status	Active

## Community Information

Address	78 Wilkinson Place
Area	Leduc
Subdivision	Windrose
City	Leduc
County	ALBERTA
Province	AB
Postal Code	T9E 8N3

## Amenities

Amenities	Air Conditioner, Bar, Deck, Fire Pit, Front Porch, No Animal Home, No Smoking Home, Natural Gas BBQ Hookup
Parking	Double Garage Attached, Heated, Insulated

## Interior

Interior Features	ensuite bathroom
Appliances	Air Conditioning-Central, Dishwasher-Built-In, Dryer, Garage Control, Garage Opener, Refrigerator, Storage Shed, Stove-Electric, Washer, Window Coverings
Heating	Forced Air-1, In Floor Heat System, Natural Gas
Fireplace	Yes
Fireplaces	Corner
Stories	2
Has Basement	Yes
Basement	Full, Finished

## Exterior

Exterior	Wood, Stone, Vinyl
Exterior Features	Airport Nearby, Backs Onto Park/Trees, Fenced, Flat Site, Fruit Trees/Shrubs, Golf Nearby, Level Land, Low Maintenance Landscape, Playground Nearby, Schools, Shopping Nearby
Roof	Asphalt Shingles
Construction	Wood, Stone, Vinyl
Foundation	Insulated Concrete Form

## School Information

Elementary	St. Benedicts
High	Ohpaho Secondary

## Additional Information

Date Listed	April 25th, 2025
Days on Market	2
Zoning	Zone 81

DATA IS DEEMED RELIABLE BUT IS NOT GUARANTEED ACCURATE BY THE REALTORS® ASSOCIATION OF EDMONTON. COPYRIGHT 2025 BY THE REALTORS® ASSOCIATION OF EDMONTON. ALL RIGHTS RESERVED. Trademarks are owned or controlled by the Canadian Real Estate Association (CREA) and identify real estate professionals who are members of CREA (REALTOR®, REALTORS®) and/or the quality of services they provide (MLS®, Multiple Listing Service®)

Listing information last updated on April 26th, 2025 at 11:17pm MDT