

\$29,900 - Hwy 44 Rr 264, Rural Westlock County

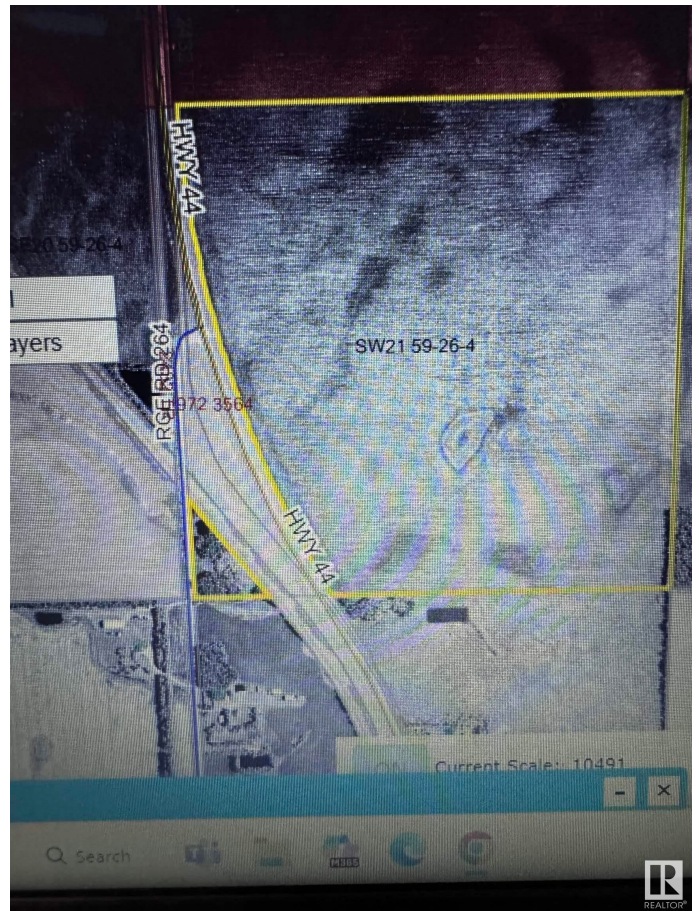
MLS® #E4433806

\$29,900

0 Bedroom, 0.00 Bathroom,
Rural on 2.70 Acres

None, Rural Westlock County, AB

Located 4 kms south of Westlock Inn on Hwy 44 & RR 264 is this 2.70 acre parcel. Go south to RR 264. Turn onto it, cross the railway and you're there. The railway is one boundary, the road another and I believe the south boundary is where the pink ribbon is tied to a tree. Terrific place to display your wares or your business in Westlock. Zoned HC (Highway Commercial).



Essential Information

MLS® #	E4433806
Price	\$29,900
Bathrooms	0.00
Acres	2.70
Type	Rural
Sub-Type	Vacant Lot/Land
Status	Active

Community Information

Address	Hwy 44 Rr 264
Area	Rural Westlock County
Subdivision	None
City	Rural Westlock County
County	ALBERTA
Province	AB
Postal Code	T7P 2P6

Exterior

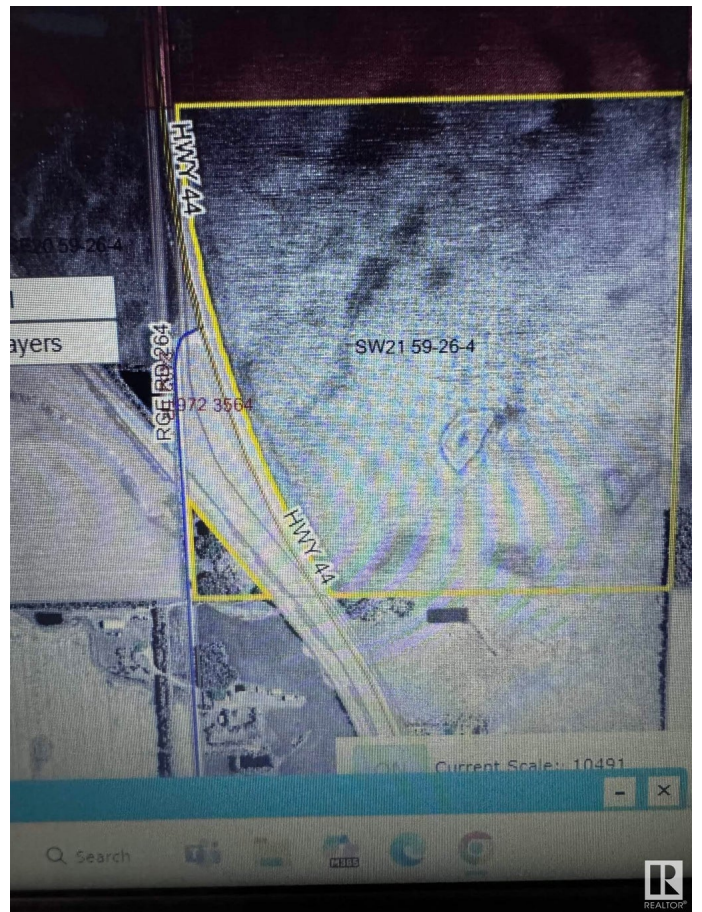
Exterior Features Treed Lot, See Remarks

Additional Information

Date Listed April 29th, 2025

Days on Market 8

Zoning Zone 70



DATA IS DEEMED RELIABLE BUT IS NOT GUARANTEED ACCURATE BY THE REALTORS[®] ASSOCIATION OF EDMONTON. COPYRIGHT 2025 BY THE REALTORS[®] ASSOCIATION OF EDMONTON. ALL RIGHTS RESERVED. Trademarks are owned or controlled by the Canadian Real Estate Association (CREA) and identify real estate professionals who are members of CREA (REALTOR[®], REALTORS[®]) and/or the quality of services they provide (MLS[®], Multiple Listing Service[®])

Listing information last updated on May 7th, 2025 at 5:47pm MDT

