

\$300,000 - 4302 Burtonsville Road, Rural Parkland County

MLS® #E4434137

\$300,000

3 Bedroom, 2.00 Bathroom, 1,704 sqft

Rural on 1.00 Acres

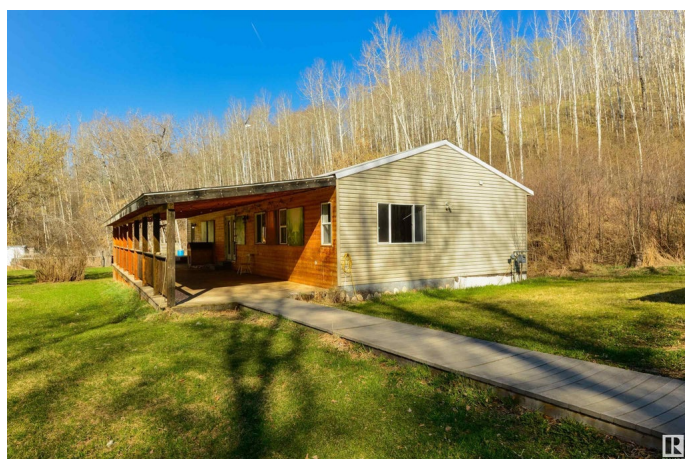
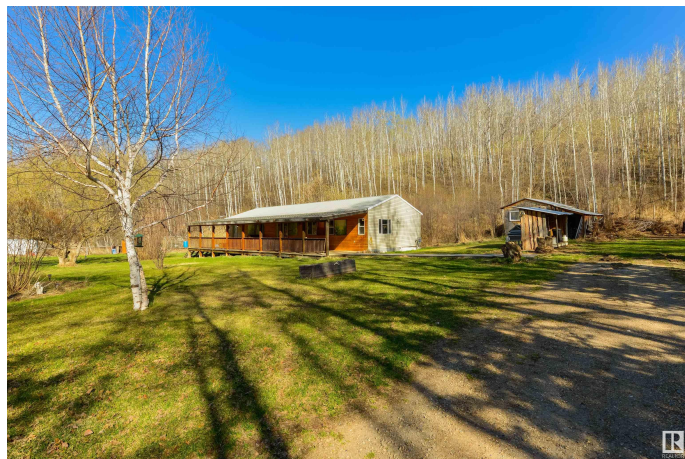
None, Rural Parkland County, AB

Peaceful and serene. This 1600 sqft bungalow is perfectly tucked away on a beautifully treed 1 acre parcel. Features here include laminate flooring, recessed pot lighting, a spacious mudroom, great kitchen with ample cupboard and countertop space, a large living and dining room, 4pc bath, and 3 generous-sized bedrooms including a king-sized owner's suite with walk-in closet and 3pc ensuite. Outside you'll find a water feature, built-in firepit, a greenhouse, two chicken coops & three sheds. Complete with a fully covered FULL-WIDTH front deck, you'll love watching the sunrises & sunsets from here!

Built in 2006

Essential Information

MLS® #	E4434137
Price	\$300,000
Bedrooms	3
Bathrooms	2.00
Full Baths	2
Square Footage	1,704
Acres	1.00
Year Built	2006
Type	Rural
Sub-Type	Detached Single Family



Style	Bungalow
Status	Active

Community Information

Address	4302 Burtonsville Road
Area	Rural Parkland County
Subdivision	None
City	Rural Parkland County
County	ALBERTA
Province	AB
Postal Code	T0E 2H0

Amenities

Features	Crawl Space, Deck, Fire Pit, Front Porch, Greenhouse, No Smoking Home, R.V. Storage, See Remarks
----------	--

Interior

Interior Features	ensuite bathroom
Heating	Forced Air-1, Natural Gas
Stories	1
Has Basement	Yes
Basement	See Remarks

Exterior

Exterior	Wood
Exterior Features	Backs Onto Park/Trees, Landscaped, Private Setting, Ravine View, Recreation Use, Treed Lot, See Remarks
Construction	Wood
Foundation	Concrete Perimeter, Piling

Additional Information

Date Listed	May 2nd, 2025
Days on Market	7
Zoning	Zone 90

DATA IS DEEMED RELIABLE BUT IS NOT GUARANTEED ACCURATE BY THE REALTORS® ASSOCIATION OF EDMONTON. COPYRIGHT 2025 BY THE REALTORS® ASSOCIATION OF EDMONTON. ALL RIGHTS RESERVED. Trademarks are owned or controlled by the Canadian Real Estate Association (CREA) and identify real estate professionals who are members of CREA (REALTOR®, REALTORS®) and/or the quality of services they provide (MLS®, Multiple Listing Service®)

Listing information last updated on May 9th, 2025 at 1:32pm MDT