

\$350,000 - Ne 16 49 4 W5 Rr 43, Rural Leduc County

MLS® #E4434568

\$350,000

0 Bedroom, 0.00 Bathroom,
Rural on 78.60 Acres

None, Rural Leduc County, AB

Beautiful 78.6 acre parcel of rolling recreational land with approximately 12 acres of open land and the balance being a mixture of poplar, spruce and birch forest. Land is fenced on three sides. The Altalink power line running along the west side of the property provides approx. \$1200 yearly revenue. GST is applicable and not included in the price.

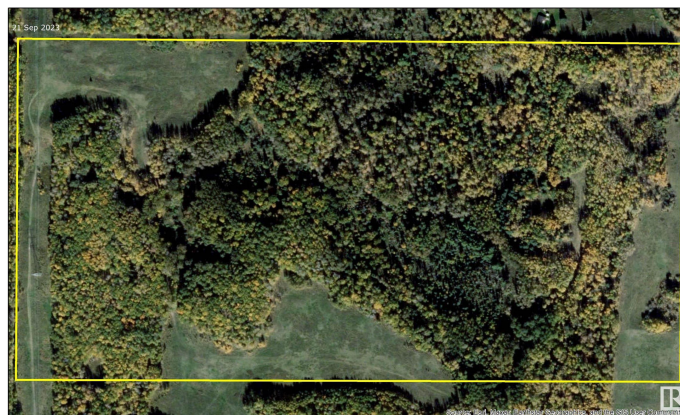
Essential Information

MLS® #	E4434568
Price	\$350,000
Bathrooms	0.00
Acres	78.60
Type	Rural
Sub-Type	Vacant Lot/Land
Status	Active

Community Information

Address	Ne 16 49 4 W5 Rr 43
Area	Rural Leduc County
Subdivision	None
City	Rural Leduc County
County	ALBERTA
Province	AB
Postal Code	T0C 0C0

Exterior



Exterior Features Private Setting, Recreation Use, See Remarks, Partially Fenced

Additional Information

Date Listed May 2nd, 2025

Days on Market 7

Zoning Zone 90

DATA IS DEEMED RELIABLE BUT IS NOT GUARANTEED ACCURATE BY THE REALTORS® ASSOCIATION OF EDMONTON. COPYRIGHT 2025 BY THE REALTORS® ASSOCIATION OF EDMONTON. ALL RIGHTS RESERVED.Trademarks are owned or controlled by the Canadian Real Estate Association (CREA) and identify real estate professionals who are members of CREA (REALTOR®, REALTORS®) and/or the quality of services they provide (MLS®, Multiple Listing Service®)

Listing information last updated on May 9th, 2025 at 5:02pm MDT