

\$668,000 - 10145 & 10155 155 Street, Edmonton

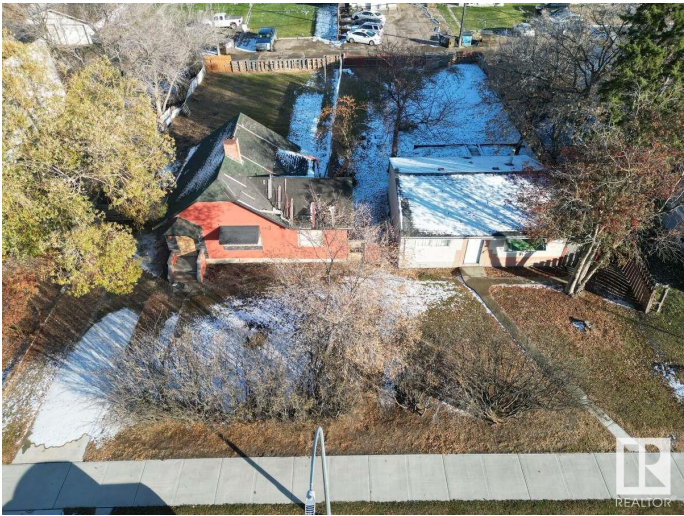
MLS® #E4434604

\$668,000

0 Bedroom, 0.00 Bathroom,
Single Family on 0.00 Acres

Canora, Edmonton, AB

For more information, please click on "View Listing on Realtor Website". Introducing a prime investment opportunity! Two adjacent lots located at 10145 & 10155 155 St NW; offer a combined size of 30.5 m x 45.1 m (100 ft x 150 ft) in the RM h16 Medium Rise Apartment Zone (4 - 8 Storeys). This fully serviced property is ideal for infilling projects or constructing a potential medium rise apartment. Its strategic location provides easy access to the future Valley Line LRT, downtown, West Edmonton Mall, and various amenities. Demolition at buyerâ€™s expense. Land-only value.



Essential Information

| | |
|-----------|-----------------|
| MLS® # | E4434604 |
| Price | \$668,000 |
| Bathrooms | 0.00 |
| Acres | 0.00 |
| Type | Single Family |
| Sub-Type | Vacant Lot/Land |
| Status | Active |

Community Information

| | |
|-------------|--------------------------|
| Address | 10145 & 10155 155 Street |
| Area | Edmonton |
| Subdivision | Canora |

| | |
|-------------|----------|
| City | Edmonton |
| County | ALBERTA |
| Province | AB |
| Postal Code | T5P 2L6 |

Exterior

Exterior Features Back Lane, Fenced, Public Transportation, Shopping Nearby

Additional Information

| | |
|----------------|---------------|
| Date Listed | May 5th, 2025 |
| Days on Market | 129 |
| Zoning | Zone 21 |

DATA IS DEEMED RELIABLE BUT IS NOT GUARANTEED ACCURATE BY THE REALTORS® ASSOCIATION OF EDMONTON. COPYRIGHT 2025 BY THE REALTORS® ASSOCIATION OF EDMONTON. ALL RIGHTS RESERVED. Trademarks are owned or controlled by the Canadian Real Estate Association (CREA) and identify real estate professionals who are members of CREA (REALTOR®, REALTORS®) and/or the quality of services they provide (MLS®, Multiple Listing Service®)

Listing information last updated on September 11th, 2025 at 3:17am MDT