

## \$274,900 - 120 4008 Savaryn Drive, Edmonton

MLS® #E4434686

**\$274,900**

2 Bedroom, 2.00 Bathroom, 924 sqft

Condo / Townhouse on 0.00 Acres

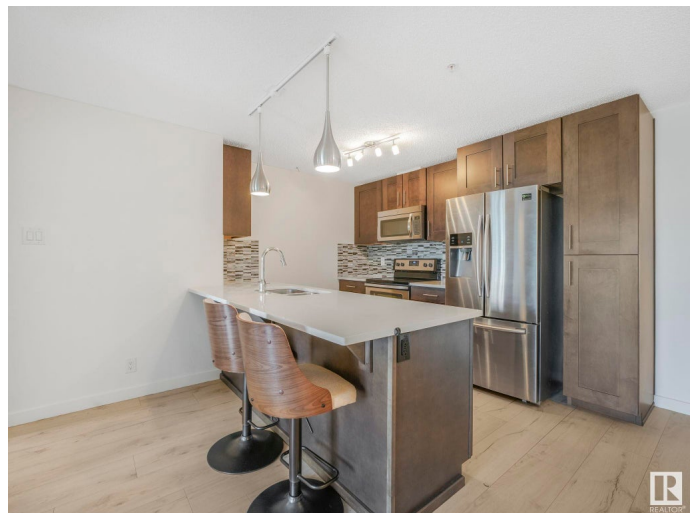
Summerside, Edmonton, AB

Welcome to this spacious 2-bedroom, 2-bathroom ground-floor unit offering the perfect blend of comfort and convenience. The open-concept layout provides a bright and airy living space, ideal for entertaining or relaxing. Step outside to your massive private patio perfect for outdoor dining, container gardening, or giving your dog room to roam freely. This well-maintained building includes access to a fully equipped fitness room and a recreation room complete with a pool table, and seating for gathering with friends and family. Enjoy the ease of two titled parking stalls—one in a heated underground garage and one above ground as well as titled storage locker on the main floor. Located just steps from schools, parks, shopping, public transportation, and with easy access to Lake Summerside, this home offers both comfort and a prime location for an active lifestyle.

Built in 2016

### Essential Information

MLS® #	E4434686
Price	\$274,900
Bedrooms	2
Bathrooms	2.00
Full Baths	2
Square Footage	924



Acres	0.00
Year Built	2016
Type	Condo / Townhouse
Sub-Type	Lowrise Apartment
Style	Single Level Apartment
Status	Active

### Community Information

Address	120 4008 Savaryn Drive
Area	Edmonton
Subdivision	Summerside
City	Edmonton
County	ALBERTA
Province	AB
Postal Code	T6X 2E5

### Amenities

Amenities	Closet Organizers, Lake Privileges, Parking-Extra, Parking-Visitor, Party Room, Patio, Secured Parking, Social Rooms
Parking Spaces	2
Parking	Heated, Underground

### Interior

Interior Features	ensuite bathroom
Appliances	Dishwasher-Built-In, Dryer, Refrigerator, Stove-Electric, Washer, Window Coverings
Heating	Baseboard, Water
# of Stories	4
Stories	1
Has Basement	Yes
Basement	None, No Basement

### Exterior

Exterior	Wood, Stone, Vinyl
Exterior Features	Beach Access, Boating, Playground Nearby, Public Transportation, Schools, Shopping Nearby
Roof	Asphalt Shingles
Construction	Wood, Stone, Vinyl
Foundation	Concrete Perimeter

**Additional Information**

Date Listed	May 6th, 2025
Days on Market	4
Zoning	Zone 53
HOA Fees	443.71
HOA Fees Freq.	Annually
Condo Fee	\$474

DATA IS DEEMED RELIABLE BUT IS NOT GUARANTEED ACCURATE BY THE REALTORS® ASSOCIATION OF EDMONTON. COPYRIGHT 2025 BY THE REALTORS® ASSOCIATION OF EDMONTON. ALL RIGHTS RESERVED.Trademarks are owned or controlled by the Canadian Real Estate Association (CREA) and identify real estate professionals who are members of CREA (REALTOR®, REALTORS®) and/or the quality of services they provide (MLS®, Multiple Listing Service®)

Listing information last updated on May 10th, 2025 at 3:47am MDT