

## \$475,000 - 6655 Cardinal Road, Edmonton

MLS® #E4436428

**\$475,000**

3 Bedroom, 2.50 Bathroom, 1,546 sqft

Single Family on 0.00 Acres

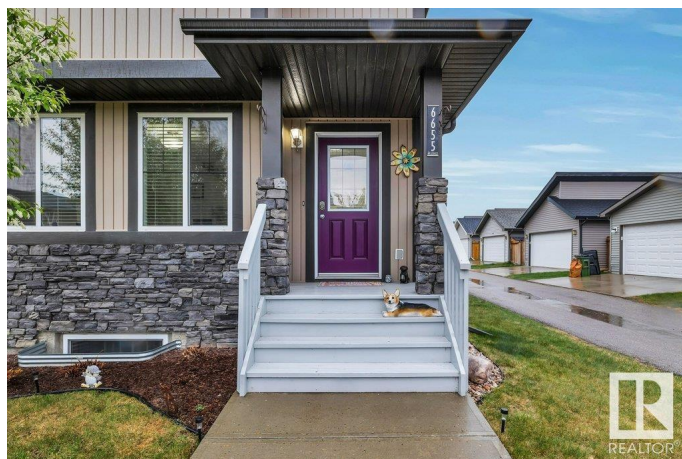
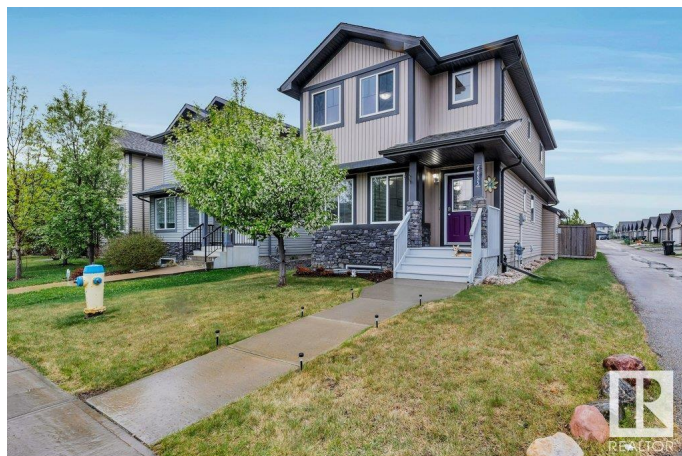
Chappelle Area, Edmonton, AB

Picture Perfect! You will be delighted the minute you pull up to this well maintained family home! Offering 3 bedrooms, 3 bathrooms, a wonderful main floor layout with hardwood flooring leading to front flex room (home office, playroom you decide), gorgeous kitchen with sleek dark cabinetry, extended eating bar, stainless appliances open to the cozy living room with GAS burning fireplace and big window to the back yard, completing the main floor is a convenient half bath, upper level offers large primary with 2 big windows, walk in closet and 3 piece ensuite, 2 additional bedrooms share a full 4 piece bath, laundry room with stacked washer and dryer complete the upper level, fully fenced and landscaped back yard with double detached garage. Don't wait on this one! Close to major amenities, schools, shopping and connecting routes.

Built in 2012

### Essential Information

|                |           |
|----------------|-----------|
| MLS® #         | E4436428  |
| Price          | \$475,000 |
| Bedrooms       | 3         |
| Bathrooms      | 2.50      |
| Full Baths     | 2         |
| Half Baths     | 1         |
| Square Footage | 1,546     |



|            |                        |
|------------|------------------------|
| Acres      | 0.00                   |
| Year Built | 2012                   |
| Type       | Single Family          |
| Sub-Type   | Detached Single Family |
| Style      | 2 Storey               |
| Status     | Active                 |

### Community Information

|             |                    |
|-------------|--------------------|
| Address     | 6655 Cardinal Road |
| Area        | Edmonton           |
| Subdivision | Chappelle Area     |
| City        | Edmonton           |
| County      | ALBERTA            |
| Province    | AB                 |
| Postal Code | T6W 1Y8            |

### Amenities

|           |   |
|-----------|---|
| Amenities | Off Street Parking, On Street Parking, Air Conditioner, Vinyl Windows |
| Parking   | Double Garage Detached  |

### Interior

|                   |  |
|-------------------|--|
| Interior Features | ensuite bathroom   |
| Appliances        | Air Conditioning-Central, Dishwasher-Built-In, Dryer, Microwave Hood Fan, Refrigerator, Stove-Electric, Washer, Window Coverings |
| Heating           | Forced Air-1, Natural Gas  |
| Fireplaces        | Glass Door   |
| Stories           | 2  |
| Has Basement      | Yes  |
| Basement          | Full, Unfinished   |

### Exterior

|                   |  |
|-------------------|--|
| Exterior          | Wood, Vinyl  |
| Exterior Features | Back Lane, Fenced, Landscaped, Playground Nearby, Schools, Shopping Nearby |
| Roof              | Asphalt Shingles   |
| Construction      | Wood, Vinyl  |
| Foundation        | Concrete Perimeter   |

### School Information

|            |                          |
|------------|--------------------------|
| Elementary | Garth Worthington School |
| Middle     | Garth Worthington School |
| High       | Dr. Anne Anderson School |

**Additional Information**

|                |                |
|----------------|----------------|
| Date Listed    | May 14th, 2025 |
| Days on Market | 3              |
| Zoning         | Zone 55        |
| HOA Fees       | 100            |
| HOA Fees Freq. | Annually       |

DATA IS DEEMED RELIABLE BUT IS NOT GUARANTEED ACCURATE BY THE REALTORS® ASSOCIATION OF EDMONTON. COPYRIGHT 2025 BY THE REALTORS® ASSOCIATION OF EDMONTON. ALL RIGHTS RESERVED.Trademarks are owned or controlled by the Canadian Real Estate Association (CREA) and identify real estate professionals who are members of CREA (REALTOR®, REALTORS®) and/or the quality of services they provide (MLS®, Multiple Listing Service®)

Listing information last updated on May 17th, 2025 at 7:17pm MDT