

\$186,000 - 6220 134 Avenue, Edmonton

MLS® #E4436957

\$186,000

2 Bedroom, 2.00 Bathroom, 949 sqft

Condo / Townhouse on 0.00 Acres

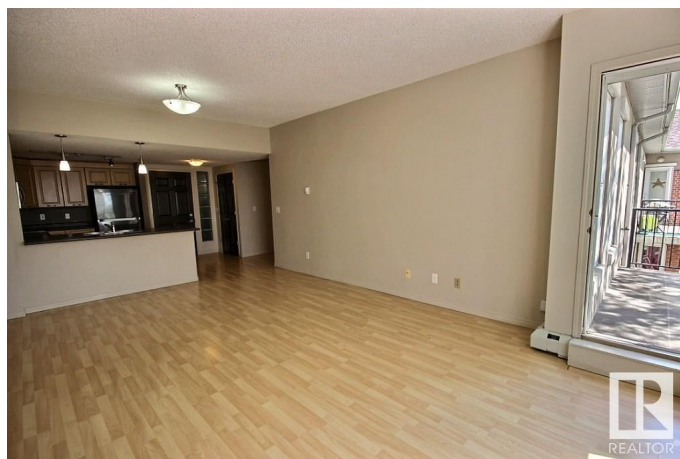
Belvedere, Edmonton, AB

Bright and Sunny South Facing Unit on the 2nd floor of a well managed Concrete (less noise) building. This 2 bed/2 bath has over 900 sqr ft to call home. Many features including balcony with natural gas, in suite laundry, walk through closet, plus additional storage locker in the underground parking. There is an elevator conveniently located across the hall which is close to your underground parking stall. The large windows allow plenty of natural light. The building also includes a workout room, courtyard, and quick access to public transit (both bus and LRT). WALKING DISTANCE to Londonderry Mall. All appliances included and Immediate possession is available. Act Now!

Built in 2006

Essential Information

MLS® #	E4436957
Price	\$186,000
Bedrooms	2
Bathrooms	2.00
Full Baths	2
Square Footage	949
Acres	0.00
Year Built	2006
Type	Condo / Townhouse



Sub-Type	Lowrise Apartment
Style	Single Level Apartment
Status	Active

Community Information

Address	6220 134 Avenue
Area	Edmonton
Subdivision	Belvedere
City	Edmonton
County	ALBERTA
Province	AB
Postal Code	T6A 0A8

Amenities

Amenities	Deck, Detectors Smoke, Hot Water Instant, Intercom, No Smoking Home, Parking-Visitor, Storage Cage
Parking	Stall, Underground

Interior

Interior Features	ensuite bathroom
Appliances	Dishwasher-Built-In, Garage Opener, Microwave Hood Fan, Refrigerator, Stacked Washer/Dryer, Stove-Electric
Heating	Baseboard, Natural Gas
# of Stories	4
Stories	1
Has Basement	Yes
Basement	None, No Basement

Exterior

Exterior	Concrete, Brick, Stucco
Exterior Features	Low Maintenance Landscape, Playground Nearby, Public Transportation, Schools, Shopping Nearby
Roof	Asphalt Shingles
Construction	Concrete, Brick, Stucco
Foundation	Concrete Perimeter

Additional Information

Date Listed	May 16th, 2025
Days on Market	28
Zoning	Zone 02

Condo Fee \$646

DATA IS DEEMED RELIABLE BUT IS NOT GUARANTEED ACCURATE BY THE REALTORS® ASSOCIATION OF EDMONTON. COPYRIGHT 2025 BY THE REALTORS® ASSOCIATION OF EDMONTON. ALL RIGHTS RESERVED.Trademarks are owned or controlled by the Canadian Real Estate Association (CREA) and identify real estate professionals who are members of CREA (REALTOR®, REALTORS®) and/or the quality of services they provide (MLS®, Multiple Listing Service®)

Listing information last updated on June 13th, 2025 at 9:48am MDT