

# **\$750,000 - 56225 Rge Road 230, Rural Sturgeon County**

MLS® #E4437024

**\$750,000**

5 Bedroom, 3.00 Bathroom, 1,426 sqft

Rural on 2.47 Acres

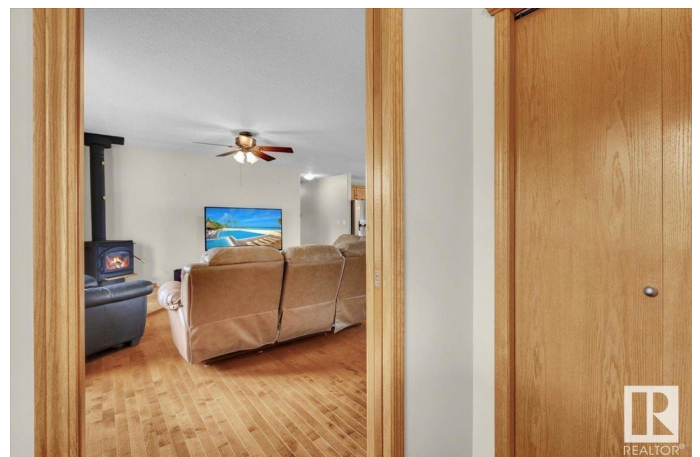
None, Rural Sturgeon County, AB

Welcome to your dream property nestled on 2.47 beautifully landscaped acres. This exceptional home offers the perfect blend of comfort, function, and privacy, with willow trees elegantly surrounding the perimeter. Step inside to discover 5 spacious bedrooms, a dedicated home office or future gym area, and an open-concept living space designed for modern living and effortless entertaining. Stay cool in the summer with central air conditioning, and enjoy the luxury of a triple attached garage plus a separate shop with loft for all your projects or storage needs. Outdoors, you'll find meticulously maintained garden beds, charming stamped concrete patios ideal for relaxing or hosting, and easy access via paved roads right to your driveway. This property truly offers it all – space, style, and serenity.

Built in 2004

## **Essential Information**

MLS® #	E4437024
Price	\$750,000
Bedrooms	5
Bathrooms	3.00
Full Baths	3
Square Footage	1,426
Acres	2.47



Year Built	2004
Type	Rural
Sub-Type	Detached Single Family
Style	Bungalow
Status	Active

### Community Information

Address	56225 Rge Road 230
Area	Rural Sturgeon County
Subdivision	None
City	Rural Sturgeon County
County	ALBERTA
Province	AB
Postal Code	T0A 1N0

### Amenities

Features	Air Conditioner, Closet Organizers, Fire Pit, Hot Water Natural Gas, No Smoking Home, Patio, Workshop
----------	---

### Interior

Interior Features	ensuite bathroom
Heating	Forced Air-1, Natural Gas
Fireplace	Yes
Stories	2
Has Basement	Yes
Basement	Full, Finished

### Exterior

Exterior	Wood
Exterior Features	Fenced, Golf Nearby, Landscaped, Schools, Partially Fenced
Construction	Wood
Foundation	Concrete Perimeter

### Additional Information

Date Listed	May 16th, 2025
Days on Market	4
Zoning	Zone 60

DATA IS DEEMED RELIABLE BUT IS NOT GUARANTEED ACCURATE BY THE REALTORS® ASSOCIATION OF EDMONTON. COPYRIGHT 2025 BY THE REALTORS® ASSOCIATION OF EDMONTON. ALL RIGHTS RESERVED. Trademarks are owned or controlled by the Canadian Real Estate Association (CREA) and identify real

estate professionals who are members of CREA (REALTOR®®, REALTORS®®) and/or the quality of services they provide (MLS®®, Multiple Listing Service®®)

Listing information last updated on May 20th, 2025 at 6:17am MDT