

\$89,000 - Sec Hwy 881, Rural St. Paul County

MLS® #E4438546

\$89,000

0 Bedroom, 0.00 Bathroom,
Rural on 13.11 Acres

None, Rural St. Paul County, AB

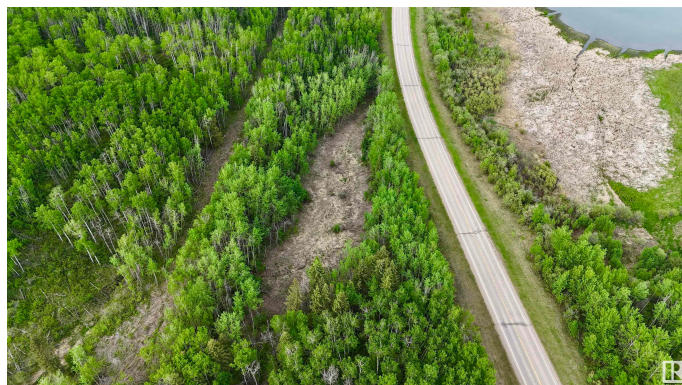
Looking for your own off-grid escape? This 13.11-acre parcel just south of town offers the perfect spot for a rustic cabin, seasonal RV setup, or weekend retreat. The property features a mix of lower-lying terrain, a natural clearing ideal for future development, and a slough—perfect for birdwatching, wildlife sightings, or simply soaking in the quiet beauty of the land. With highway access nearby, you™re close enough for convenience but far enough to truly unplug. Secure your piece of St. Paul County and start making memories outdoors.

Essential Information

MLS® #	E4438546
Price	\$89,000
Bathrooms	0.00
Acres	13.11
Type	Rural
Sub-Type	Vacant Lot/Land
Status	Active

Community Information

Address	Sec Hwy 881
Area	Rural St. Paul County
Subdivision	None
City	Rural St. Paul County



County	ALBERTA
Province	AB
Postal Code	T0A 3A0

Exterior

Exterior Features Private Setting, Treed Lot

Additional Information

Date Listed May 26th, 2025

Days on Market 11

Zoning Zone 60

DATA IS DEEMED RELIABLE BUT IS NOT GUARANTEED ACCURATE BY THE REALTORS® ASSOCIATION OF EDMONTON. COPYRIGHT 2025 BY THE REALTORS® ASSOCIATION OF EDMONTON. ALL RIGHTS RESERVED. Trademarks are owned or controlled by the Canadian Real Estate Association (CREA) and identify real estate professionals who are members of CREA (REALTOR®, REALTORS®) and/or the quality of services they provide (MLS®, Multiple Listing Service®)

Listing information last updated on June 5th, 2025 at 11:47pm MDT