

\$387,000 - 13215 72 Street, Edmonton

MLS® #E4439404

\$387,000

3 Bedroom, 2.00 Bathroom, 1,057 sqft

Single Family on 0.00 Acres

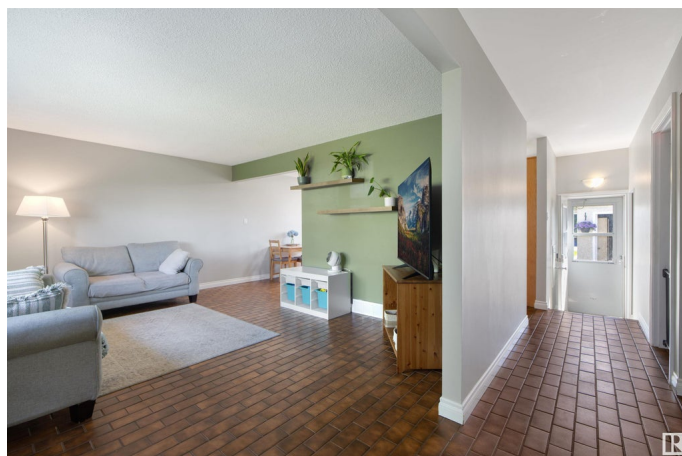
Delwood, Edmonton, AB

Welcome to Delwood! This well maintained 3-level split with detached double garage features close to 1,800 sq ft of finished space to call home. As you enter, you will be welcomed into the bright living room with its bay window, brick tile flooring, and adjacent dining area. Enjoy cooking in your spacious kitchen with plenty of counter space, updated cabinetry, and backyard views. Journey upstairs to your primary bedroom with stylish feature wall, 2 additional bedrooms, and the updated 4-piece bath. The lower level, which features the laundry, a 3-piece bath, an oversized family room with large windows, a flex space, and a utility room with ample storage. Enjoy the long summer days in the large back yard with concrete patio, fire pit, and apple tree. Features newer shingles and hot water tank. Easy access to public transit, schools, parks, Yellowhead Trail, and Manning Drive. A must see!

Built in 1963

Essential Information

MLS® #	E4439404
Price	\$387,000
Bedrooms	3
Bathrooms	2.00
Full Baths	2



Square Footage	1,057
Acres	0.00
Year Built	1963
Type	Single Family
Sub-Type	Detached Single Family
Style	3 Level Split
Status	Active

Community Information

Address	13215 72 Street
Area	Edmonton
Subdivision	Delwood
City	Edmonton
County	ALBERTA
Province	AB
Postal Code	T5C 0R1

Amenities

Amenities	On Street Parking, No Smoking Home, Vinyl Windows
Parking Spaces	4
Parking	Double Garage Detached

Interior

Appliances	Dishwasher-Built-In, Dryer, Garage Control, Garage Opener, Microwave Hood Fan, Refrigerator, Stove-Electric, Washer, Window Coverings
Heating	Forced Air-1, Natural Gas
Stories	3
Has Basement	Yes
Basement	Full, Finished

Exterior

Exterior	Wood, Brick, Stucco
Exterior Features	Back Lane, Fenced, Fruit Trees/Shrubs, Playground Nearby, Public Transportation, Schools, Shopping Nearby
Roof	Asphalt Shingles
Construction	Wood, Brick, Stucco
Foundation	Concrete Perimeter

School Information

Elementary	St. Matthew, Kildare
Middle	Balwin, Londonderry
High	O'Leary, M.E LaZerte

Additional Information

Date Listed	May 30th, 2025
Days on Market	9
Zoning	Zone 02

DATA IS DEEMED RELIABLE BUT IS NOT GUARANTEED ACCURATE BY THE REALTORS® ASSOCIATION OF EDMONTON. COPYRIGHT 2025 BY THE REALTORS® ASSOCIATION OF EDMONTON. ALL RIGHTS RESERVED.Trademarks are owned or controlled by the Canadian Real Estate Association (CREA) and identify real estate professionals who are members of CREA (REALTOR®, REALTORS®) and/or the quality of services they provide (MLS®, Multiple Listing Service®)

Listing information last updated on June 8th, 2025 at 12:47pm MDT