

Courtesy Of Lindsay Mercer Of The Good Real Estate Company

\$889,000 - 12 53120 Rge Road 15, Rural Parkland County

MLS® #E4444520

\$889,000

4 Bedroom, 3.50 Bathroom, 1,676 sqft

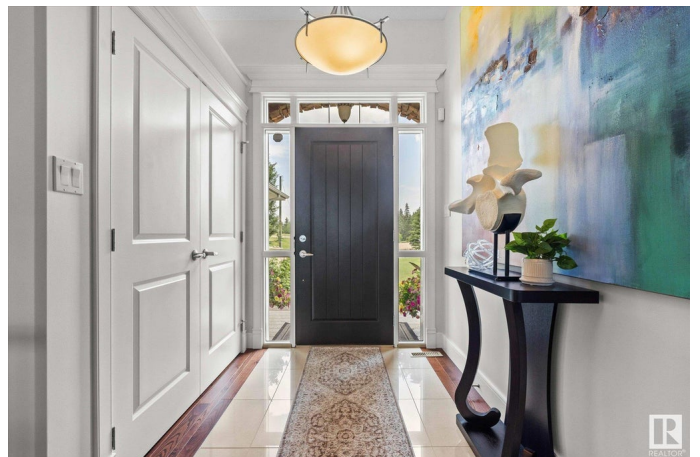
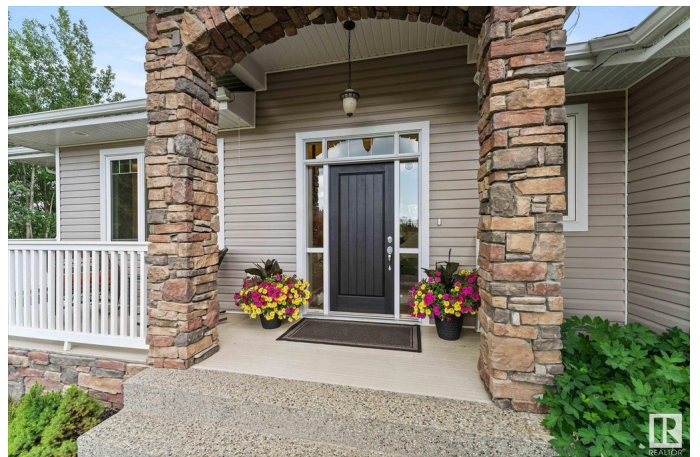
Rural on 2.05 Acres

The Views at Willow Peak, Rural Parkland County, AB

Welcome home to this incredible custom build walkout bungalow with 3078 sq/ft of living space just 7 min west of Stony Plain! No expense was spared on this gorgeous 4 bedroom, 4 bath home with hardwood floors, granite counters throughout and coffered ceilings. The chef's kitchen features luxury DCS appliances, walk through pantry and separate coffee bar area. Perfect for multi-generational living a SECOND kitchen, living rm & primary bdrm with ensuite have a separate entrance on the main level! Downstairs you find a second primary bedroom with gorgeous ensuite, two additional bdrms, full bath and flex space with 2nd gas FP. The west-facing covered deck overlooks your pristinely manicured backyard with fire pit area, gazebo & raised garden beds. There's even a chicken coop! So much PRIVACY! TWO furnaces, oversized HWT and fully insulated & soundproofed interior walls. Triple heated garage and just 2 minutes from Beach Corner store, restaurant and best of all... the ice cream shop. This home is a must see!

Built in 2011

Essential Information



MLS® #	E4444520
Price	\$889,000
Bedrooms	4
Bathrooms	3.50
Full Baths	3
Half Baths	1
Square Footage	1,676
Acres	2.05
Year Built	2011
Type	Rural
Sub-Type	Detached Single Family
Style	Hillside Bungalow
Status	Active

Community Information

Address	12 53120 Rge Road 15
Area	Rural Parkland County
Subdivision	The Views at Willow Peak
City	Rural Parkland County
County	ALBERTA
Province	AB
Postal Code	T7Y 2E4

Amenities

Features	Air Conditioner, Ceiling 9 ft., Deck, Detectors Smoke, Gazebo, Hot Tub, Vinyl Windows, Walkout Basement, Natural Gas BBQ Hookup
----------	---

Interior

Interior Features	ensuite bathroom
Heating	Forced Air-2, Natural Gas
Fireplace	Yes
Stories	2
Has Basement	Yes
Basement	Full, Finished

Exterior

Exterior	Wood
Exterior Features	Cul-De-Sac, Fruit Trees/Shrubs, Landscaped, Partially Fenced
Construction	Wood

Foundation Concrete Perimeter

Additional Information

Date Listed June 26th, 2025
Days on Market 32
Zoning Zone 90

DATA IS DEEMED RELIABLE BUT IS NOT GUARANTEED ACCURATE BY THE REALTORS® ASSOCIATION OF EDMONTON. COPYRIGHT 2025 BY THE REALTORS® ASSOCIATION OF EDMONTON. ALL RIGHTS RESERVED.Trademarks are owned or controlled by the Canadian Real Estate Association (CREA) and identify real estate professionals who are members of CREA (REALTOR®, REALTORS®) and/or the quality of services they provide (MLS®, Multiple Listing Service®)
Listing information last updated on July 28th, 2025 at 8:02pm MDT