

Courtesy Of Jeremy Dolinsky Of RE/MAX River City

## \$2,600 - 903 Ebbers Crescent, Edmonton

MLS® #E4444750

**\$2,600**

4 Bedroom, 3.5 Bathroom, 1,485 sqft

Rental on 0.00 Acres

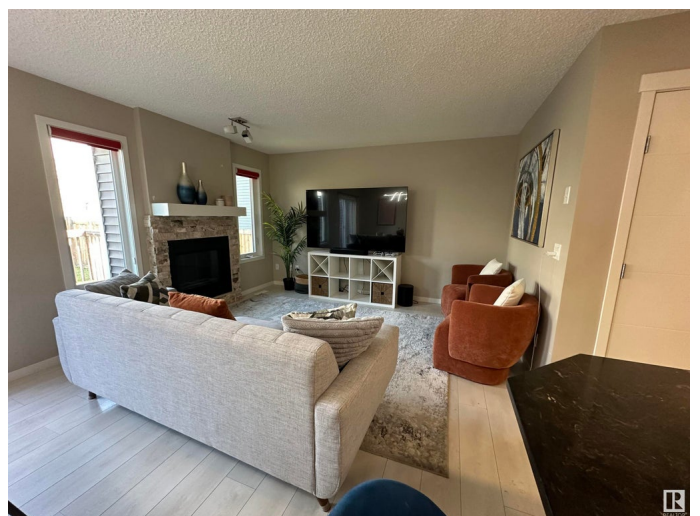
Ebbers, Edmonton, AB

For rent â€“ Available July 15th! Beautiful 2-storey half duplex with 4 bedrooms, 3.5 baths, and a single attached garage. Main floor features a peninsula kitchen with granite counters, walk-through pantry, eating bar, dining area, living room with gas fireplace, half bath, and large entry closet. Upstairs has 3 bedrooms, full bath with soaker tub, and 2nd floor laundry. The primary suite includes a 4pc ensuite and walk-in closet. Finished basement offers a family room, 4th bedroom, full bath, and storage. Fully fenced, landscaped yard with a deck. Great location near parks, off-leash area, Manning Crossing, and Anthony Henday. Rent is \$2,600/month + utilities. Security deposit and credit check required with application.

Built in 2016

### Essential Information

MLS® #	E4444750
Price	\$2,600
Bedrooms	4
Bathrooms	3.50
Full Baths	3
Half Baths	1
Square Footage	1,485
Acres	0.00



Year Built	2016
Type	Rental
Style	2 Storey
Status	Active

### **Community Information**

Address	903 Ebbers Crescent
Area	Edmonton
Subdivision	Ebbers
City	Edmonton
County	ALBERTA
Province	AB
Postal Code	T5Y 3V1

### **Amenities**

Parking	Parking Pad Cement/Paved, Single Garage Attached
---------	--

### **Interior**

Appliances	Dishwasher-Built-In, Dryer, Refrigerator, Stove-Electric, Washer
------------	--

### **Additional Information**

Date Listed	June 26th, 2025
Days on Market	4
Zoning	Zone 02

DATA IS DEEMED RELIABLE BUT IS NOT GUARANTEED ACCURATE BY THE REALTORS® ASSOCIATION OF EDMONTON. COPYRIGHT 2025 BY THE REALTORS® ASSOCIATION OF EDMONTON. ALL RIGHTS RESERVED. Trademarks are owned or controlled by the Canadian Real Estate Association (CREA) and identify real estate professionals who are members of CREA (REALTOR®, REALTORS®) and/or the quality of services they provide (MLS®, Multiple Listing Service®)

Listing information last updated on June 30th, 2025 at 9:02pm MDT