

## \$349,000 - 305 3 Street, Rural Lac Ste. Anne County

MLS® #E4446708

**\$349,000**

5 Bedroom, 2.00 Bathroom, 1,720 sqft

Rural on 0.18 Acres

Ross Haven, Rural Lac Ste. Anne County, AB

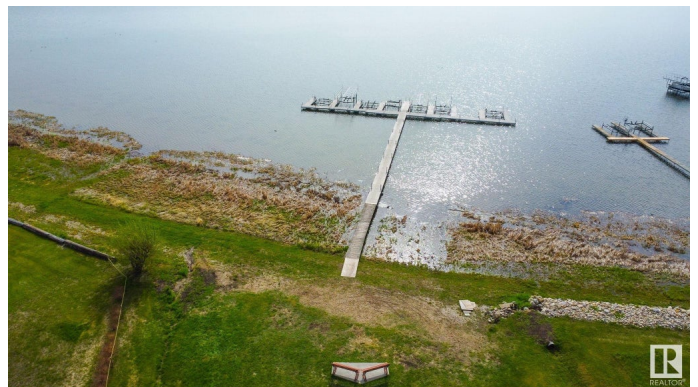
Welcome to your YEAR ROUND escape in the charming Village of Ross Haven. This bright, MODERN 5 bedroom, 2 bath home offers the perfect blend of comfort, space and lifestyle for families or retirees with room for many visitors. With a spacious open layout, HUGE WINDOWS and a massive kitchen complete with spacious island, it's made for hosting and soaking in lake life. Sip your drink on the west-facing deck or play lawn games on the largest PUBLIC GREEN SPACE in the village, backing your property, completely maintained for you to enjoy without the work! Live where neighbours feel like family, where kids can ride bikes safely and where summer is filled with community events and days on the water. Low-maintenance landscaping means more time enjoying paddleboarding or gathering at the community dock. PEACEFUL, PRIVATE AND MOVE-IN-READY, all just steps from the lake! Other perks include in-floor heating, metal roof, room to build a garage, newly drilled well and option to connect to the municipal sewer.

Built in 2012

### Essential Information

MLS® # E4446708

Price \$349,000



Bedrooms	5
Bathrooms	2.00
Full Baths	2
Square Footage	1,720
Acres	0.18
Year Built	2012
Type	Rural
Sub-Type	Detached Single Family
Style	Bungalow
Status	Active

### **Community Information**

Address	305 3 Street
Area	Rural Lac Ste. Anne County
Subdivision	Ross Haven
City	Rural Lac Ste. Anne County
County	ALBERTA
Province	AB
Postal Code	T0A 0E0

### **Amenities**

Features	Ceiling 9 ft., Deck, Exterior Walls- 2"x6", Hot Water Tankless, Lake Privileges, No Smoking Home, Vinyl Windows
----------	---

### **Interior**

Interior Features	ensuite bathroom
Heating	In Floor Heat System, Natural Gas
Stories	1
Has Basement	Yes
Basement	None, No Basement

### **Exterior**

Exterior	Wood
Exterior Features	Backs Onto Park/Trees, Beach Access, Boating, Lake Access Property, Picnic Area
Construction	Wood
Foundation	Piling

### **Additional Information**

Date Listed July 9th, 2025

Days on Market 12

Zoning Zone 71

DATA IS DEEMED RELIABLE BUT IS NOT GUARANTEED ACCURATE BY THE REALTORS® ASSOCIATION OF EDMONTON. COPYRIGHT 2025 BY THE REALTORS® ASSOCIATION OF EDMONTON. ALL RIGHTS RESERVED. Trademarks are owned or controlled by the Canadian Real Estate Association (CREA) and identify real estate professionals who are members of CREA (REALTOR®, REALTORS®) and/or the quality of services they provide (MLS®, Multiple Listing Service®)

Listing information last updated on July 21st, 2025 at 5:17am MDT