

\$469,900 - 14767 140 Street, Edmonton

MLS® #E4447083

\$469,900

4 Bedroom, 3.50 Bathroom, 1,341 sqft

Single Family on 0.00 Acres

Cumberland, Edmonton, AB

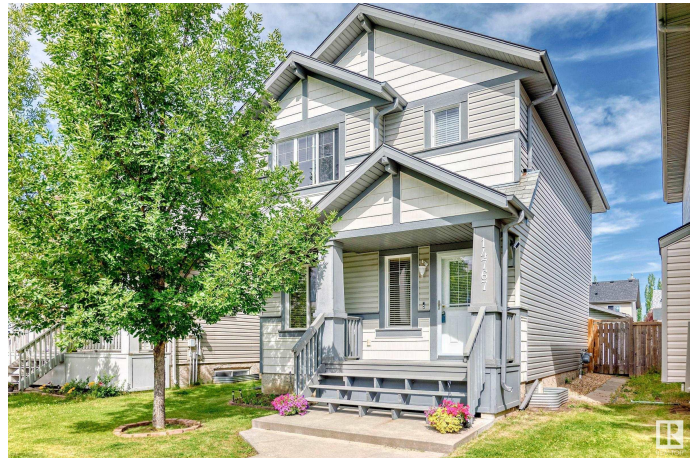
Welcome to this STUNNING 2 storey home situated in the desirable community of Cumberland! Features 1341 sqft, features total of 4 bedrooms/3.5 bathrooms/living room/family room & a double garage. Main floor offers large living room w bright windows, cozy fireplace, fresh painting & nice hardwood floorings throughout, adjacent to a good-sized dining area. Spacious kitchen offers modern cabinetries/raised centre kitchen island/double sink w bright windows overlooking to deck/prof landscaped & fenced yard, your private oasis for relaxation & entertainment. Convenient main floor 1/2 bath. Upper level offers 3 generous bedrooms all w laminate floorings. Master bedroom has walk-in closet & a 4pc en-suite bathroom. Another 4pc bathroom for the 2nd & 3rd bedrm. BASEMENT c/w 4th bedroom/family rm/3 pc bathroom/laundry & utility rm. Newer SS fridge/washer & dryer. Carpet free home! Only steps to school/playground/public trans/school/shopping & all amenities. Perfect for live in or investment! Just move-in & enjoy!

Built in 2007

Essential Information

MLS® # E4447083

Price \$469,900



Bedrooms	4
Bathrooms	3.50
Full Baths	3
Half Baths	1
Square Footage	1,341
Acres	0.00
Year Built	2007
Type	Single Family
Sub-Type	Detached Single Family
Style	2 Storey
Status	Active

Community Information

Address	14767 140 Street
Area	Edmonton
Subdivision	Cumberland
City	Edmonton
County	ALBERTA
Province	AB
Postal Code	T6V 0A4

Amenities

Amenities	Deck, Front Porch
Parking Spaces	4
Parking	Double Garage Detached

Interior

Interior Features	ensuite bathroom
Appliances	Dishwasher-Built-In, Dryer, Garage Control, Garage Opener, Hood Fan, Refrigerator, Storage Shed, Stove-Electric, Washer, Curtains and Blinds
Heating	Forced Air-1, Natural Gas
Fireplace	Yes
Fireplaces	Mantel
Stories	3
Has Basement	Yes
Basement	Full, Finished

Exterior

Exterior	Wood, Vinyl
----------	-------------

Exterior Features	Back Lane, Fenced, Landscaped, Public Transportation, Schools, Shopping Nearby
Roof	Asphalt Shingles
Construction	Wood, Vinyl
Foundation	Concrete Perimeter

School Information

Elementary	Hilwie Hamdon School
Middle	St John Thompson

Additional Information

Date Listed	July 10th, 2025
Days on Market	10
Zoning	Zone 27

DATA IS DEEMED RELIABLE BUT IS NOT GUARANTEED ACCURATE BY THE REALTORS® ASSOCIATION OF EDMONTON. COPYRIGHT 2025 BY THE REALTORS® ASSOCIATION OF EDMONTON. ALL RIGHTS RESERVED. Trademarks are owned or controlled by the Canadian Real Estate Association (CREA) and identify real estate professionals who are members of CREA (REALTOR®, REALTORS®) and/or the quality of services they provide (MLS®, Multiple Listing Service®)

Listing information last updated on July 20th, 2025 at 1:32pm MDT