

\$789,000 - 16 50410 Rr 275, Rural Parkland County

MLS® #E4447678

\$789,000

5 Bedroom, 3.50 Bathroom, 4,753 sqft

Rural on 3.30 Acres

Honey Vale Acres, Rural Parkland County, AB

Private forest retreat on 3.3 acres with private river access. Step inside to an impressive open concept layout , soaring vaulted ceilings , sturdy custom built concrete construction home. Numerous skylights throughout the home creating a bright and airy atmosphere. HUGE kitchen, stunning primary with spa like ensuite and walk in closet. Two heated attached garages provide year round convenience. Enjoy beautiful country views from every angle! relax on one of the 3 upper decks, work out your own personal studio, ENDLESS POSSIBILITIES! Warmth of passive solar/in floor heating or one of the numerous fireplaces throughout the house will keep you warm on cooler nights. entertain with ease, two patios equipped with firepits at opposite ends of the home, 2 patios in front, surrounded by mature trees to maintain privacy. landscaped with a lazy river running through the property. This is a rare opportunity to own a private retreat of your own !This property must be seen to be truly appreciated!

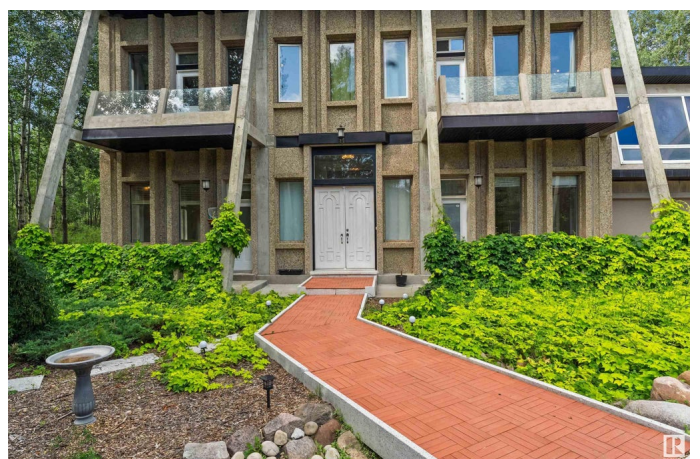
Built in 1998

Essential Information

MLS® # E4447678

Price \$789,000

Bedrooms 5



Bathrooms	3.50
Full Baths	3
Half Baths	1
Square Footage	4,753
Acres	3.30
Year Built	1998
Type	Rural
Sub-Type	Detached Single Family
Style	2 Storey
Status	Active

Community Information

Address	16 50410 Rr 275
Area	Rural Parkland County
Subdivision	Honey Vale Acres
City	Rural Parkland County
County	ALBERTA
Province	AB
Postal Code	T7Y 2T8

Amenities

Features	Closet Organizers, Deck, Detectors Smoke, Exercise Room, Fire Pit, Front Porch, Guest Suite, Hot Tub, Hot Water Natural Gas, Parking-Plug-Ins, Patio, Recreation Room/Centre, Sauna; Swirlpool; Steam, Secured Parking, Skylight, Vaulted Ceiling, See Remarks, Vacuum System-Roughed-In
Parking Spaces	10

Interior

Interior Features	ensuite bathroom
Heating	Forced Air-2, In Floor Heat System, Electric, Natural Gas
Fireplace	Yes
Stories	2
Has Basement	Yes
Basement	None, No Basement

Exterior

Exterior	Concrete
Exterior Features	Backs Onto Park/Trees, Treed Lot, Vegetable Garden, See Remarks

Construction	Concrete
Foundation	Slab

Additional Information

Date Listed	July 14th, 2025
Days on Market	48
Zoning	Zone 90

DATA IS DEEMED RELIABLE BUT IS NOT GUARANTEED ACCURATE BY THE REALTORS® ASSOCIATION OF EDMONTON. COPYRIGHT 2025 BY THE REALTORS® ASSOCIATION OF EDMONTON. ALL RIGHTS RESERVED.Trademarks are owned or controlled by the Canadian Real Estate Association (CREA) and identify real estate professionals who are members of CREA (REALTOR®, REALTORS®) and/or the quality of services they provide (MLS®, Multiple Listing Service®)

Listing information last updated on August 31st, 2025 at 5:32am MDT