

Courtesy Of Christina A Reid Of Century 21 Leading

\$430,500 - 16 6905 25 Avenue, Edmonton

MLS® #E4448363

\$430,500

3 Bedroom, 2.50 Bathroom, 1,407 sqft

Condo / Townhouse on 0.00 Acres

The Orchards At Ellerslie, Edmonton, AB

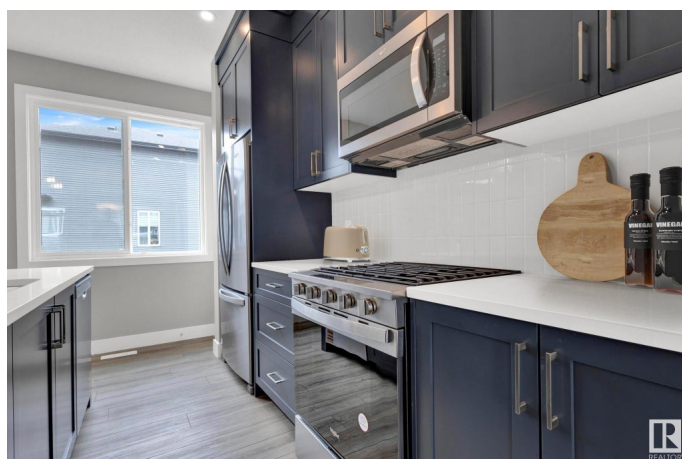
Introducing The Holiday - A BRAND-NEW Townhome home offering 1,407 sq ft of elegant and functional living in the sought after SE community of The Orchards. The upgraded kitchen comes with cabinet risers to the ceiling, 3 cm quartz, gas range, and a double door fridge with internal water dispenser. The ground floor includes a double car garage and finished flex space. The upper floor primary bedroom has space for a king sized bed, as well as features a walk in closet, and ensuite. Along with the beautiful oasis, there are two additional bedrooms located on the upper floor. Triple pane windows are included throughout the whole home, keeping it warm in the winter and cool in the summer! The Orchards is a vibrant, family-friendly community that provides residents with access to beautiful parks, serene ponds, and scenic walking trails. Plus, enjoy exclusive use of the 8-acre private clubhouse, which offers amenities for all ages, such as a spray park, NHL-sized skating rink, playgrounds, tennis and basketball

Built in 2025

Essential Information

MLS® # E4448363

Price \$430,500



Bedrooms	3
Bathrooms	2.50
Full Baths	2
Half Baths	1
Square Footage	1,407
Acres	0.00
Year Built	2025
Type	Condo / Townhouse
Sub-Type	Townhouse
Style	3 Storey
Status	Active

Community Information

Address	16 6905 25 Avenue
Area	Edmonton
Subdivision	The Orchards At Ellerslie
City	Edmonton
County	ALBERTA
Province	AB
Postal Code	T6X 3B7

Amenities

Amenities	Carbon Monoxide Detectors, Detectors Smoke, Parking-Visitor, Smart/Program. Thermostat, HRV System
Parking	Double Garage Attached

Interior

Interior Features	ensuite bathroom
Appliances	Dishwasher-Built-In, Garage Control, Garage Opener, Refrigerator, Stacked Washer/Dryer, Stove-Gas
Heating	Forced Air-1, Natural Gas
Stories	3
Has Basement	Yes
Basement	None, Partially Finished

Exterior

Exterior	Wood, Vinyl
Exterior Features	Airport Nearby, Golf Nearby, Landscaped, Public Transportation, Schools, Shopping Nearby

Roof	Asphalt Shingles
Construction	Wood, Vinyl
Foundation	Slab

School Information

Elementary	Divine Mercy
Middle	JAN REIMER K-9
High	J. PERCY PAGE

Additional Information

Date Listed	July 17th, 2025
Days on Market	3
Zoning	Zone 53
HOA Fees	450
HOA Fees Freq.	Annually
Condo Fee	\$293

DATA IS DEEMED RELIABLE BUT IS NOT GUARANTEED ACCURATE BY THE REALTORS® ASSOCIATION OF EDMONTON. COPYRIGHT 2025 BY THE REALTORS® ASSOCIATION OF EDMONTON. ALL RIGHTS RESERVED. Trademarks are owned or controlled by the Canadian Real Estate Association (CREA) and identify real estate professionals who are members of CREA (REALTOR®, REALTORS®) and/or the quality of services they provide (MLS®, Multiple Listing Service®)

Listing information last updated on July 20th, 2025 at 4:47pm MDT