

\$550,000 - 11022 110 Avenue, Edmonton

MLS® #E4456395

\$550,000

6 Bedroom, 3.00 Bathroom, 1,841 sqft
Single Family on 0.00 Acres

Queen Mary Park, Edmonton, AB

DOUBLE WIDE CORNER LOT! OVER 13,380 SQ.FT OF LAND COMBINED. THE LIST PRICE IS PER LOT. PROPERTIES 11026 - 110 Avenue & 11022- 110 Avenue located next to 3 green fields/parks in Queen Mary Park. Steps from Nait campus, Kingsway Mall, Grant Macewan, & Downtown. Perfect for redevelopment or investment opportunity! Houses could be Sold separately.

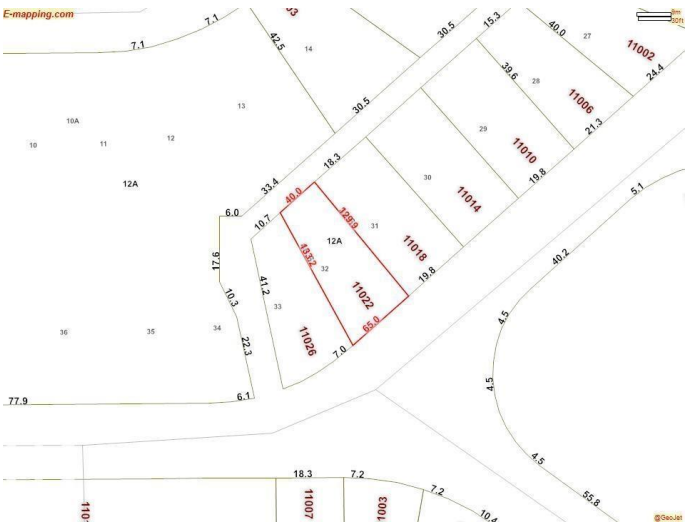
Built in 1951

Essential Information

MLS® #	E4456395
Price	\$550,000
Bedrooms	6
Bathrooms	3.00
Full Baths	3
Square Footage	1,841
Acres	0.00
Year Built	1951
Type	Single Family
Sub-Type	Detached Single Family
Style	2 Storey
Status	Active

Community Information

Address	11022 110 Avenue
Area	Edmonton



Subdivision	Queen Mary Park
City	Edmonton
County	ALBERTA
Province	AB
Postal Code	T5H 1H9

Amenities

Amenities	See Remarks
Parking	Front Drive Access

Interior

Appliances	See Remarks
Heating	Baseboard, Hot Water, Natural Gas
Stories	3
Has Basement	Yes
Basement	Full, Finished

Exterior

Exterior	Wood, Stucco
Exterior Features	Picnic Area, Playground Nearby, Public Swimming Pool, Public Transportation, Schools, Shopping Nearby, Subdividable Lot, View Downtown
Lot Description	6130 SQ.FT
Roof	Asphalt Shingles
Construction	Wood, Stucco
Foundation	Concrete Perimeter

Additional Information

Date Listed	September 5th, 2025
Days on Market	22
Zoning	Zone 08

DATA IS DEEMED RELIABLE BUT IS NOT GUARANTEED ACCURATE BY THE REALTORS® ASSOCIATION OF EDMONTON. COPYRIGHT 2025 BY THE REALTORS® ASSOCIATION OF EDMONTON. ALL RIGHTS RESERVED. Trademarks are owned or controlled by the Canadian Real Estate Association (CREA) and identify real estate professionals who are members of CREA (REALTOR®, REALTORS®) and/or the quality of services they provide (MLS®, Multiple Listing Service®)

Listing information last updated on September 27th, 2025 at 4:02am MDT