

Courtesy Of Allison R McDougall Of RE/MAX River City

\$1,187,000 - N/A, Edmonton

MLS® #E4462400

\$1,187,000

4 Bedroom, 3.50 Bathroom, 2,361 sqft

Single Family on 0.00 Acres

Capilano, Edmonton, AB

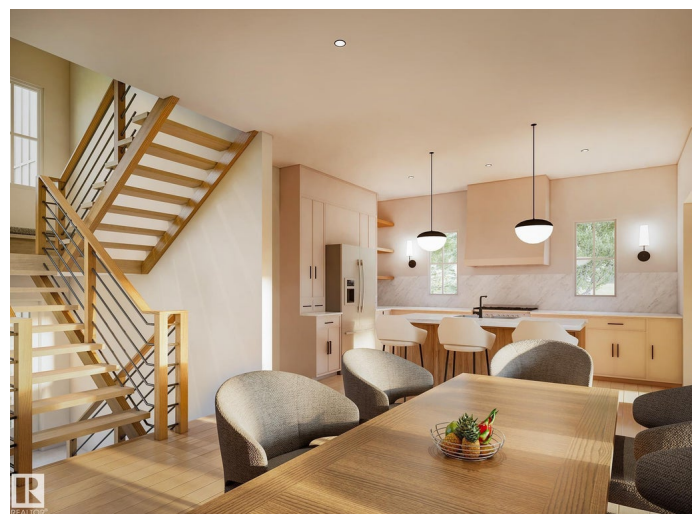
PLATINUM PROPERTY! A rare new build in Capilano where timeless design meets modern craftsmanship. This 2,306 sq ft home (plus finished basement) sits on a 33.5â€™ lot facing a serene green space in one of Edmonton's most desirable mature communities. Built by a local builder where quality matters, every detail is thoughtfully executed from precise framing to premium materials, including Lux windows. Inside, creamy white interiors, warm wood tones, and 10â€™ ceilings create inviting elegance. The chef's kitchen features a 36â€• gas range, wood hood fan cover, quartz counters, full-slab backsplash, and a walk-through pantry with coffee station. Arched entryways, open-riser stairs, and custom built-ins shelving, benches, cubbies, and a cozy reading nook add charm & function. Upstairs: 3 bdrms, laundry, & a serene primary suite with dual vanities, wood cabinetry, & sleek black fixtures. Amazing location just steps to Suzuki Charter School, trails, & the river valley. Completion Summer 2026. Photos are renderings.

Built in 2025

Essential Information

MLS® # E4462400

Price \$1,187,000



Lease Rate	\$10
Bedrooms	4
Bathrooms	3.50
Full Baths	3
Half Baths	1
Square Footage	2,361
Acres	0.00
Year Built	2025
Type	Single Family
Sub-Type	Detached Single Family
Style	2 Storey
Status	Active

Community Information

Address	N/A
Area	Edmonton
Subdivision	Capilano
City	Edmonton
County	ALBERTA
Province	AB
Postal Code	T6A 1S7

Amenities

Amenities	See Remarks
Parking	Double Garage Detached

Interior

Interior Features	ensuite bathroom
Appliances	Air Conditioning-Central, Dishwasher-Built-In, Dryer, Garage Control, Garage Opener, Hood Fan, Refrigerator, Stove-Gas, Washer, Wine/Beverage Cooler
Heating	Forced Air-1, Natural Gas
Fireplace	Yes
Fireplaces	Wall Mount
Stories	3
Has Basement	Yes
Basement	Full, Finished

Exterior

Exterior	Wood, Brick, Vinyl, Hardie Board Siding
Exterior Features	Golf Nearby, Paved Lane, Picnic Area, Playground Nearby, Public Swimming Pool, Public Transportation, Ravine View, River Valley View, River View, Schools, Shopping Nearby, See Remarks
Roof	Asphalt Shingles
Construction	Wood, Brick, Vinyl, Hardie Board Siding
Foundation	Concrete Perimeter

School Information

Elementary	Suzuki Charter School
Middle	Hardisty School
High	McNally School

Additional Information

Date Listed	October 16th, 2025
Days on Market	4
Zoning	Zone 19

DATA IS DEEMED RELIABLE BUT IS NOT GUARANTEED ACCURATE BY THE REALTORS® ASSOCIATION OF EDMONTON. COPYRIGHT 2025 BY THE REALTORS® ASSOCIATION OF EDMONTON. ALL RIGHTS RESERVED. Trademarks are owned or controlled by the Canadian Real Estate Association (CREA) and identify real estate professionals who are members of CREA (REALTOR®, REALTORS®) and/or the quality of services they provide (MLS®, Multiple Listing Service®)

Listing information last updated on October 20th, 2025 at 6:17pm MDT